

▲ VERTICAL BRACKET

▲ ART NO: 912118

▲ FITS COMMON BALCONY ATTACHMENTS

▲ M10 C/C 100 MM

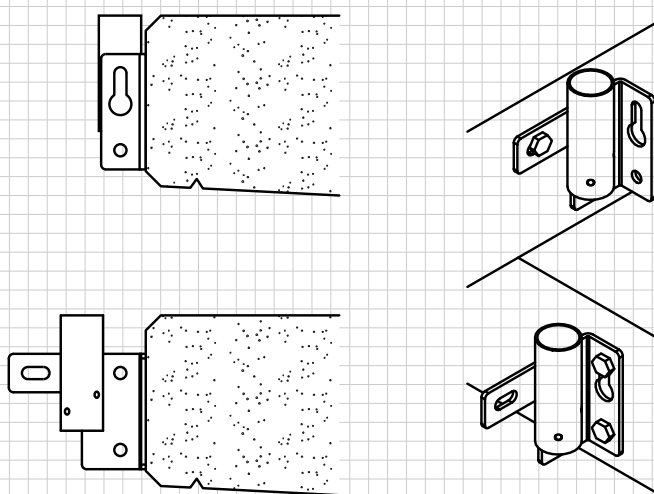
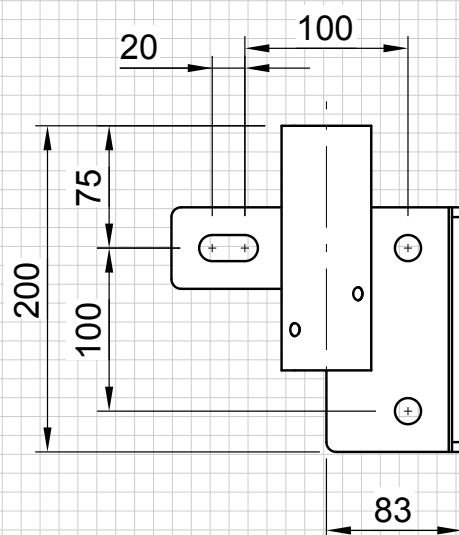
▲ TWO MOUNTING OPTIONS

▲ MOUNTING C/C UP TO 2,4 M

▲ HOT GALVANIZED

▲ WEIGHT 1,4 KG

The vertical bracket is used on facades, balconies or slab edges. The vertical bracket allows mounting at the working level. Alternative mounting position is outside the slab edge when there is a need for access to the slab edge.



We reserve the right to make technical changes.