

# WE SAVE LIVES

FALL PROTECTION  
GUIDE 2020



**SAFETYRESPECT®**

# IN **Safety** Respect EVERY STEP



## PLANNING

We help you with an analysis of your fall protection needs at an early stage of the project.



## SOLUTIONS

You are provided with a complete proposal for solutions, including training, personal and collective fall protection, based on what is best for your project.



## LOGISTICS

Let us manage the logistics so the right fall protection is delivered and returned at the right time.



## INSTALLATION

With our help, installation is carried out quickly and efficiently without slowing down other operations.



## CHECKS

Our system for regular safety checks provides you with clear documentation and a higher level of safety throughout the project period.

## CONTENTS

Company presentation	4
Product development	6
Factory	7

### FALL PROTECTION GUIDE

Introduction	8
Planning	10
Solutions	11
Logistics	12
Installation	13
Checks	14

### TRAINING COURSES

Introduction	16
Basic training courses	18
Personal fall protection	20
Collective fall protection	22

### PERSONAL FALL PROTECTION

Introduction	24
Slabs and flat roofs	26
Mobile platforms	27
Positioning	27
Sloping roofs	28
Rescue	29

### COLLECTIVE FALL PROTECTION

Introduction	30
Slab edges	32
Balconies	34
Wall openings	35
Floor openings and shafts	36
Stairs	38
Steel structures	40
Long spans	42
Wood structures	43
Prefabricated elements	44
Concrete casting	48
Casting in site	49
Roofs and facades	50
Hall constructions	54
Falling objects	58
Scaffoldings	63
Blocking	64
Attachments	66
Transportation	67

### PRODUCT OVERVIEW

Standard system	68
Flex system	72
Hall system	73
Safety fan system	74
Other products	75
Guard rail system	77
Personal fall protection	78

### CONTACT INFORMATION

Head office	80
Depots	80

# We save lives

With SafetyRespect, you get more than fall protection products – you get an expert partner who stands by your side. We help you take control of the fall protection in every step of the construction process.

Accidents involving falls are one of the most common causes of injuries and deaths in the construction industry. For that reason, our most important task as fall protection experts is to protect lives. With the right knowledge and smart products, we are convinced that it is possible to bring about positive change.

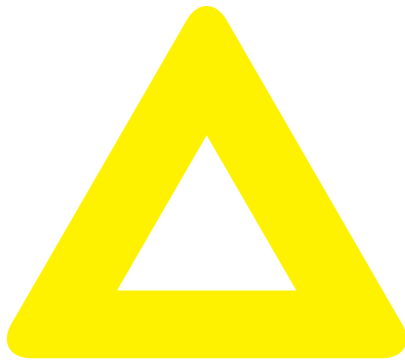
We provide both fall protection and fall protection training courses for construction projects of all kinds. We are involved throughout the process and carry out calculations, produce documentation, deliver fall protection and carry out safety checks. Focusing at all times on providing you with the best solution for your project.

Since the products are manufactured in our own factory and we ourselves take care of the entire process from sale to assembly and logistics, we are close to our customers at all times. We work to develop both our products and our ways of working in line with your needs. Our aim is that you will notice this in your contact with us, every time and in every step.

Per Ramberger  
Managing Director  
SafetyRespect

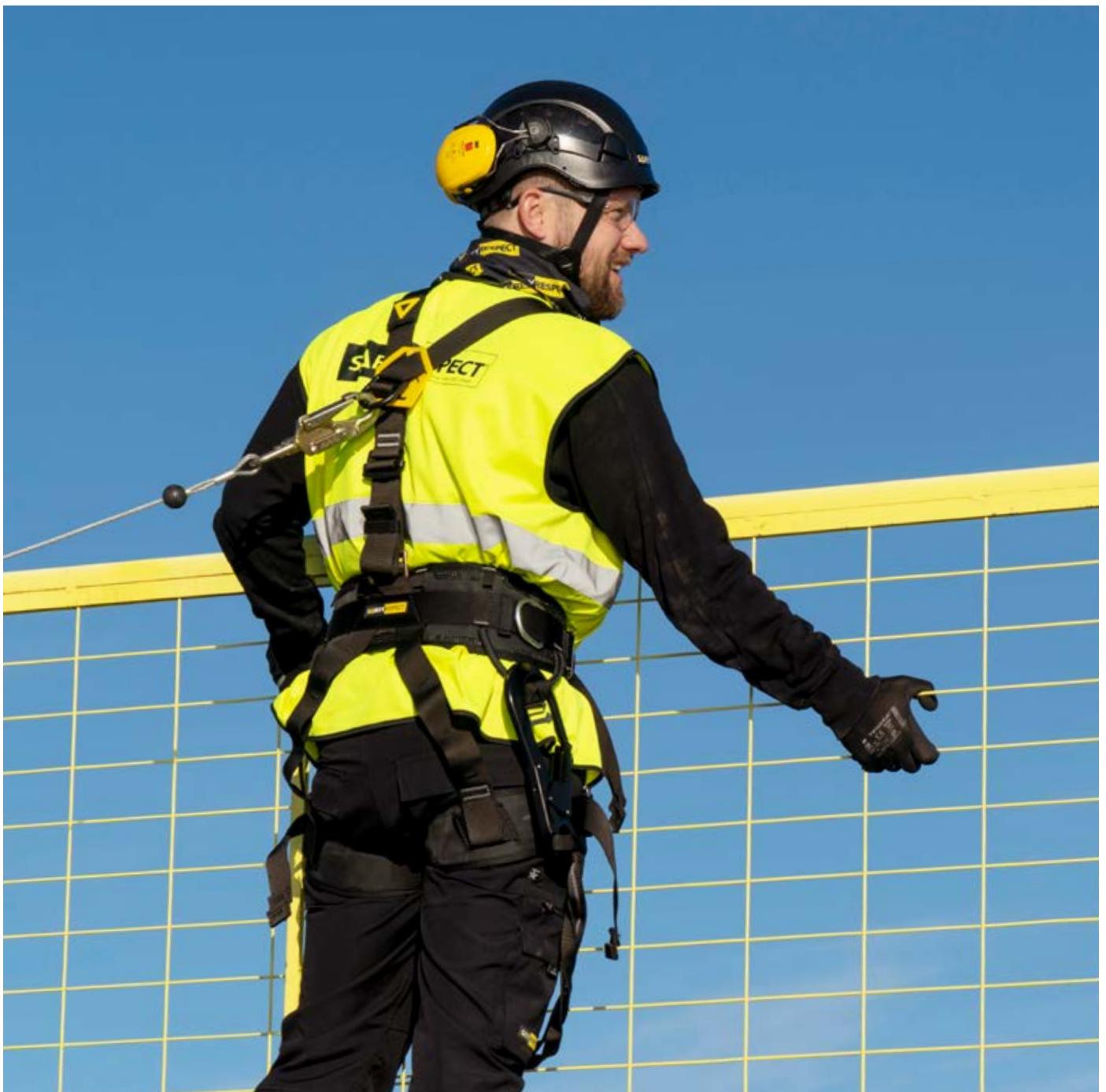






# A fall protection expert with a complete solution

Different projects require different fall protection solutions. One thing all solutions have in common is that you must know how to use the protection in order to use it correctly. We make it easy for you by offering a full range of products and services, all designed for the construction industry.





## TRAINING COURSES

Working at height can be dangerous – for that reason it is important to be aware of the risks and to know how to prevent them.

The SafetyRespect Academy courses will teach you more about falling risks and how our products should be used. Our customised training courses include training on laws and rules, theoretical and practical knowledge and handling and checking the equipment.

Participants receive a digital certificate upon passing the course. You have access to your certificate and other course documentation at all times in our on-line training platform.

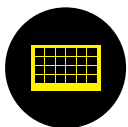


## PERSONAL FALL PROTECTION

Personal fall protection is used when assembling collective fall protection or when no other suitable fall protection solution is available.

We have tailored kits that are designed for different situations in the construction project, for example for work on roofs, slabs or from a mobile platform. You can also put together your own solution from our range of individual products.

All parts of our personal fall protection are designed for the construction industry, are of high quality and comply with the latest updated EU regulations on personal fall protection equipment.



## COLLECTIVE FALL PROTECTION

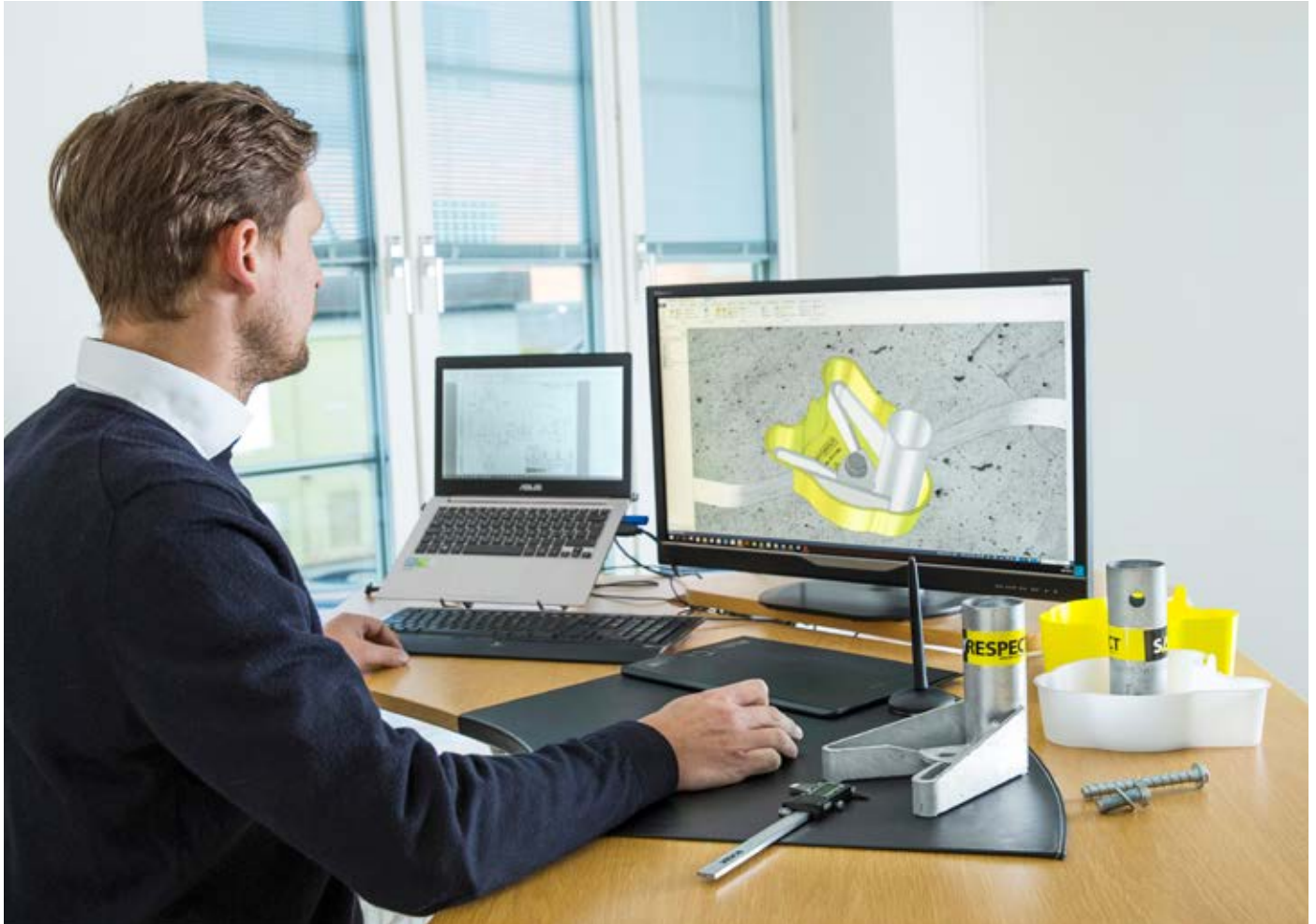
In construction work where there is a risk of falling, the protection measures chosen should primarily be communal – collective fall protection.

We have a wide range of collective fall protection products and are constantly developing new solutions that are designed for different construction methods. Our products are easy to use, without compromising on safety.

Our products are mainly manufactured in our own factory, which allows flexibility, quality control and the ability to manage capacity. Sales, rental and assembly of our fall protection solutions take place through our own depots. All this places us in close proximity to you – our customer. It helps us identify your needs and enables us to constantly develop better solutions focusing on the customer's needs.







# Product development based on the customer

We are close to our customers. That means that your ideas and requirements quickly can be turned into prototypes that can be tested and evaluated both in our own lab and out on actual projects.

We usually work with short development times from the idea to the finished product. Our product council involves people from different positions within our organisation. We are thus able to ensure that the solutions we develop are relevant to the market and that all interested parties are able to have their say.

After a feasibility study, a number of prototypes are developed for testing and evaluation before a final design is produced and preparations for production take place. We often allow a zero batch series to be used on a pilot project to get real feedback from the users before a product is officially launched.





# Manufacturing in our own high-tech factory

Our fall protection products are primarily manufactured in our own modern factory. This results in short lead times and excellent potential for customisation.

In SafetyRespect, we control our entire value chain and production forms a key part of that. Our own production allows us greater flexibility, full quality control and also the ability to control capacity according to our needs. For our customers, this mainly provides them with an assurance that that we are able to deliver the right products at the right time.

Our current factory opened in spring 2017 and has a production area of approximately 6000 m<sup>2</sup>. Our modern

machines and equipment and high level of automation enable us to work from a long-term perspective according to clear quality and environmental goals. The business is of course certified according to the ISO 9001, 14001 and 45001 standards.

From our factory, we can deliver anywhere in Europe by truck within one week. For longer transports, we have extensive experience of dealing with a range of container solutions.



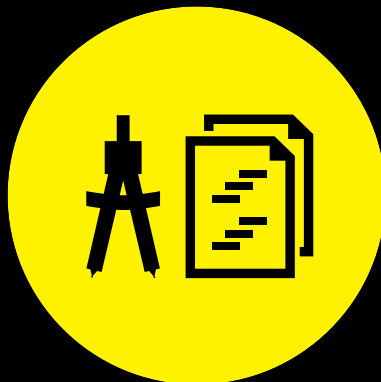
# From planning to finished project – we are with you in every step

When you choose fall protection from SafetyRespect, you also choose to have an expert by your side in every step. From the planning stage until the project has been completed, we contribute expertise and working methods that provide you with the best fall protection solutions for your construction project.

# 1

## PLANNING

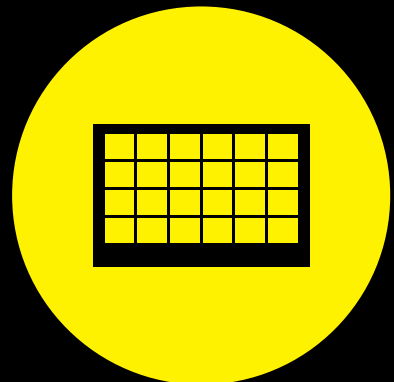
As early as the project planning stage, we carry out a fall protection analysis in which we identify situations involving a risk of falling. We then work with you to plan solutions right from the drawing board.



# 2

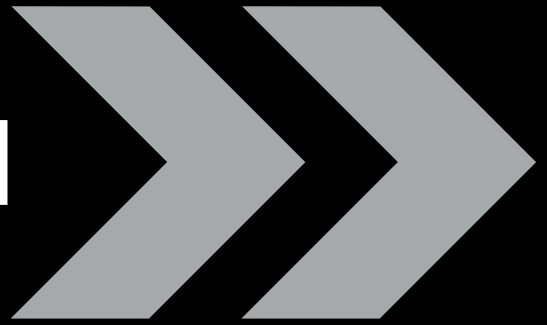
## SOLUTIONS

Based on the fall protection analysis, we develop the best design for solutions for your construction project, regardless of whether you require personal or collective fall protection. We also offer the training courses required in order to handle the protection.





# THE FALL PROTECTION GUIDE



## 3

### LOGISTICS

We solve the logistics and arrange transport so the right fall protection is delivered and returned at the right time throughout the construction process. We also offer a return service that is provided directly on the construction site.



## 4

### INSTALLATION

With our help, installation is carried out quickly and efficiently, without slowing down the other construction activities. You can also feel confident that the installation will be carried out correctly, which provides a safer working environment.



## 5

### CHECKS

Our system for regular security checks provides you with clear documentation and higher safety levels throughout the project period. The check we refer to as SafetyCheck is carried out in our mobile app and can be shared with those involved.



# 1

## PLANNING



## Plan the fall protection at an early stage

Starting to plan fall protection in the project planning phase allows for a cheaper and safer solution. If you allow us to become involved in the project at an early stage, you will have a better chance of obtaining the best possible fall protection.

We have a large selection of fall protection because different situations require different solutions. We help you with an analysis of the situations where falls may occur and give you advice on what fall protection will be best for your particular project.

In general, it's better to include the fall protection solutions in the project design at an early stage. SafetyRespect has products and solutions for all phases of the construction project and we know that

solutions that are developed at an early stage and that can be used throughout the construction period will be best for all parties concerned.

During the planning phase, we produce documentation using CAD and BIM software. Clear documentation and simple instructions make it easier for all project participants. The assembly is easier and the right products are used in the right phase of the project.

# 2

## SOLUTIONS



## Solutions for every need

Once we have mapped out your needs, we can offer everything from training courses to different kinds of fall protection. That means that you get a complete solution that is suited to your project.

We have a full range of products in both collective and personal fall protection. That means that we can help you with most of the different fall protection situations that may arise. We can also offer the training courses required to enable you to handle fall protection safely.

Since we develop and manufacture all our fall protection products ourselves, we have thorough knowledge of how they work and can also solve more complex situations. Our technical support is available to you throughout the construction project.



# 3

## LOGISTICS



## We solve the logistics

Logistics can be complex in a construction project. Let us arrange the transports for you so the right fall protection is delivered to the right place at the right time.

Our depots puts us in close proximity to our customers. We arrange transports of fall protection from the depots so you get exactly the fall protection you need when it's time to assemble it. You don't need to have fall protection standing in the workplace for assembly later on. Instead, you have it delivered Just in Time.

We also offer a return service directly on the construction site. When it's time to return fall protection, we can come to the workplace and collect the material for you and prepare and arrange the return logistics. This service means optimized returns and minimal handling.

# 4

## INSTALLATION



## Fast and efficient installation

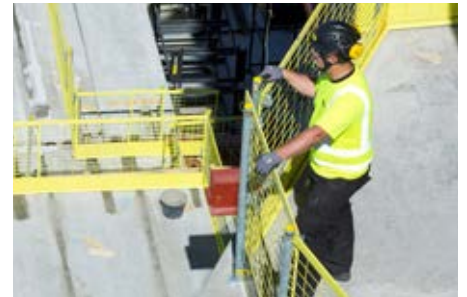
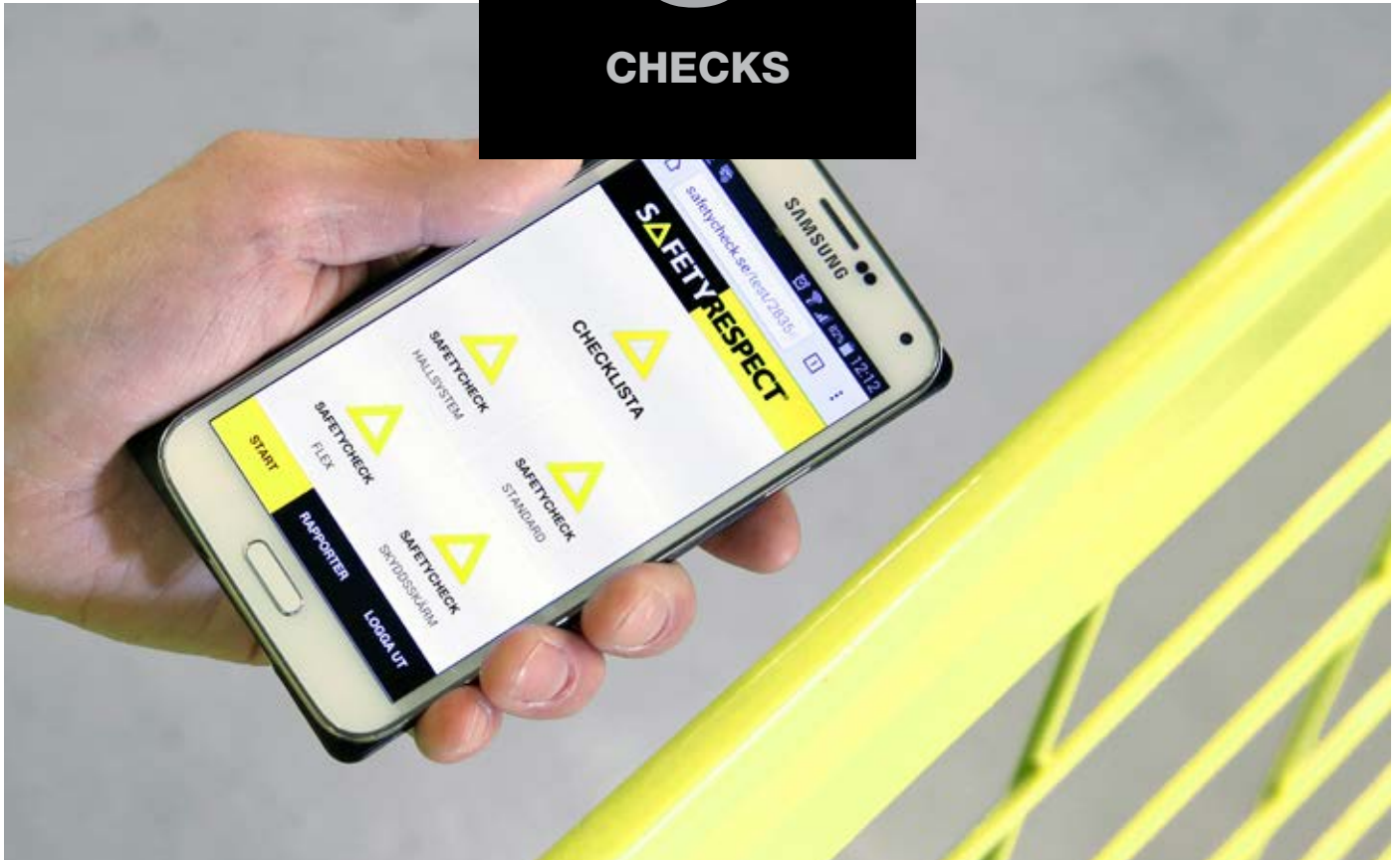
With our fall protection experts, the installation is carried out quickly and efficiently. You can also feel confident that the installation has been carried out properly, which provides a safer working environment.

Let an expert carry out the installation of collective fall protection on the construction project. With our help, the installation is carried out quickly, without slowing down the other construction activities. You can also

be sure that the fall protection has been correctly installed. Some solutions, such as assembly and installation of working platforms, also require specially trained personnel.



# 5 CHECKS




## SAFETYCHECK System for safety checks

Regular safety checks make it even easier for you to keep an eye on the risks of falls throughout the construction period. Our SafetyCheck can be carried out in a mobile app and can be documented and shared with those concerned.

To enable you to ensure even higher levels of safety on the construction site, we offer a regular safety check of assembled fall protection, a so-called SafetyCheck. Any defects detected during the check are documented,

along with proposals for action. The documentation is available via a website or in our mobile app and can easily be printed or shared electronically with people who need to know the results.





*“With SafetyRespect, you get more than fall protection products – you get an expert partner who stands by your side.”*



# SAFETYRESPECT ACADEMY

## The right knowledge provides safer fall protection

Working at height can be dangerous – for that reason it is important to be aware of the risks and to know how to prevent them. Our courses at the Safetyrespect Academy help you create a safer working environment.

Through SafetyRespect Academy, we teach you how our products should be used – within our whole range of collective and personal fall protection. We help you find the training course that is relevant to your project or the combination of courses that best suits your company or your workplace.

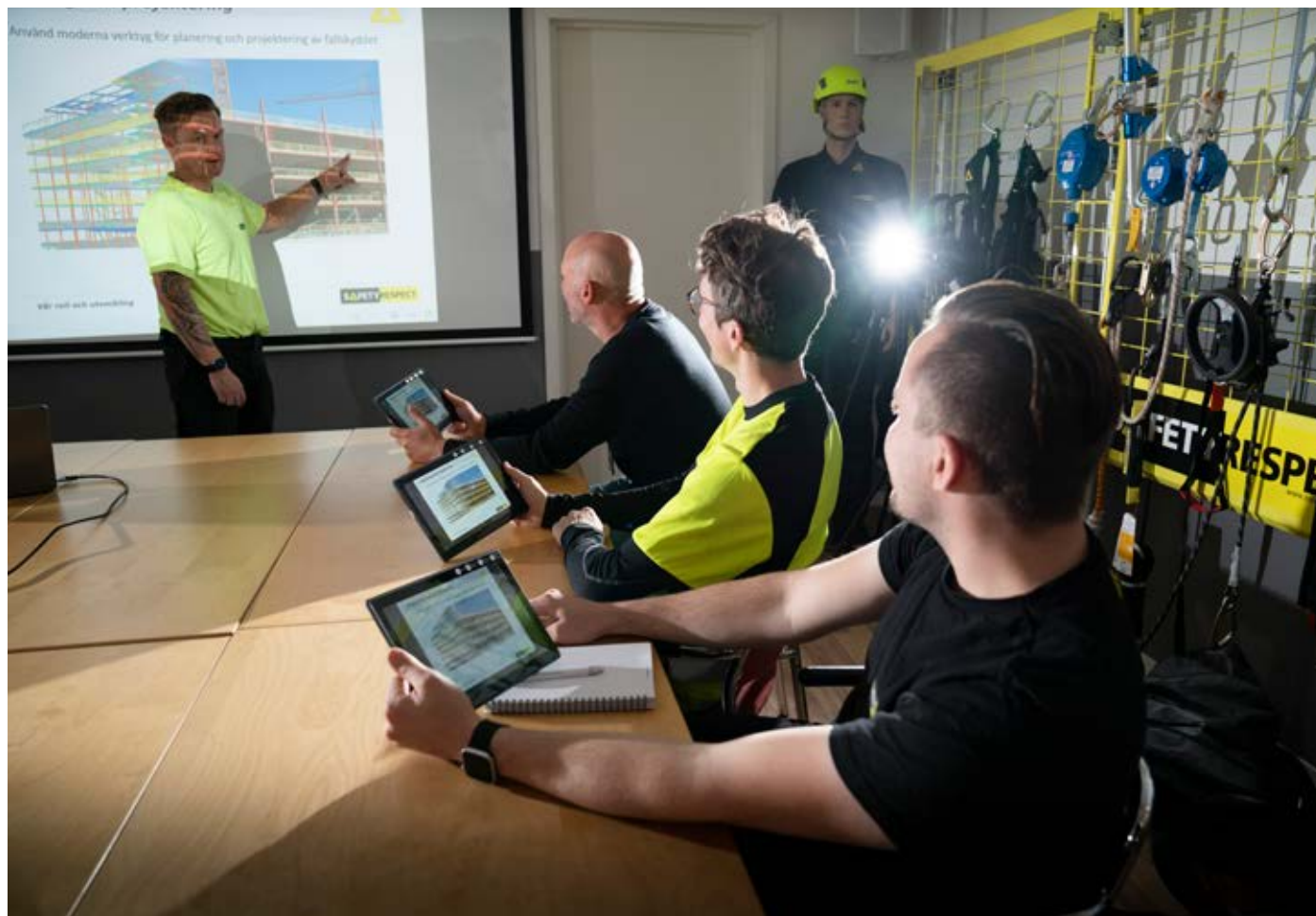
Our courses are linked together in an on-line training platform – Academy Portal. You can access course materials, view your certificates and in some cases also do training courses. The material is available in the training portal at all times.









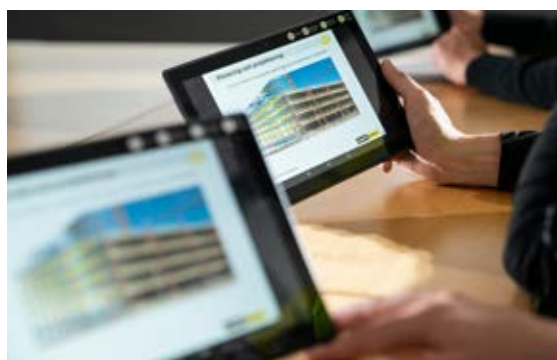


# BASIC TRAINING COURSES

## INTRODUCTION TO FALL PROTECTION

An on-line introduction for anyone working in an environment where there is a risk of falling. The course provides knowledge about the rules that apply, different fall protection methods and which products are suitable for use in different situations.

Previous knowledge required: None.  
Course length: 1 hour.  
Number of participants: Unlimited number.  
Location: Distance learning, via a browser.



## PERSONAL FALL PROTECTION – BASIC

Introduction for those who carry out work in an environment where personal fall protection is a requirement. The course provides you with knowledge of the applicable laws and regulations and how to use your personal equipment.

Previous knowledge required: On-line course – Introduction to fall protection (included).  
Course length: 4 hours.  
Number of participants: Maximum of 8.  
Location: SafetyRespect's premises (or at the customer if the right conditions exist).





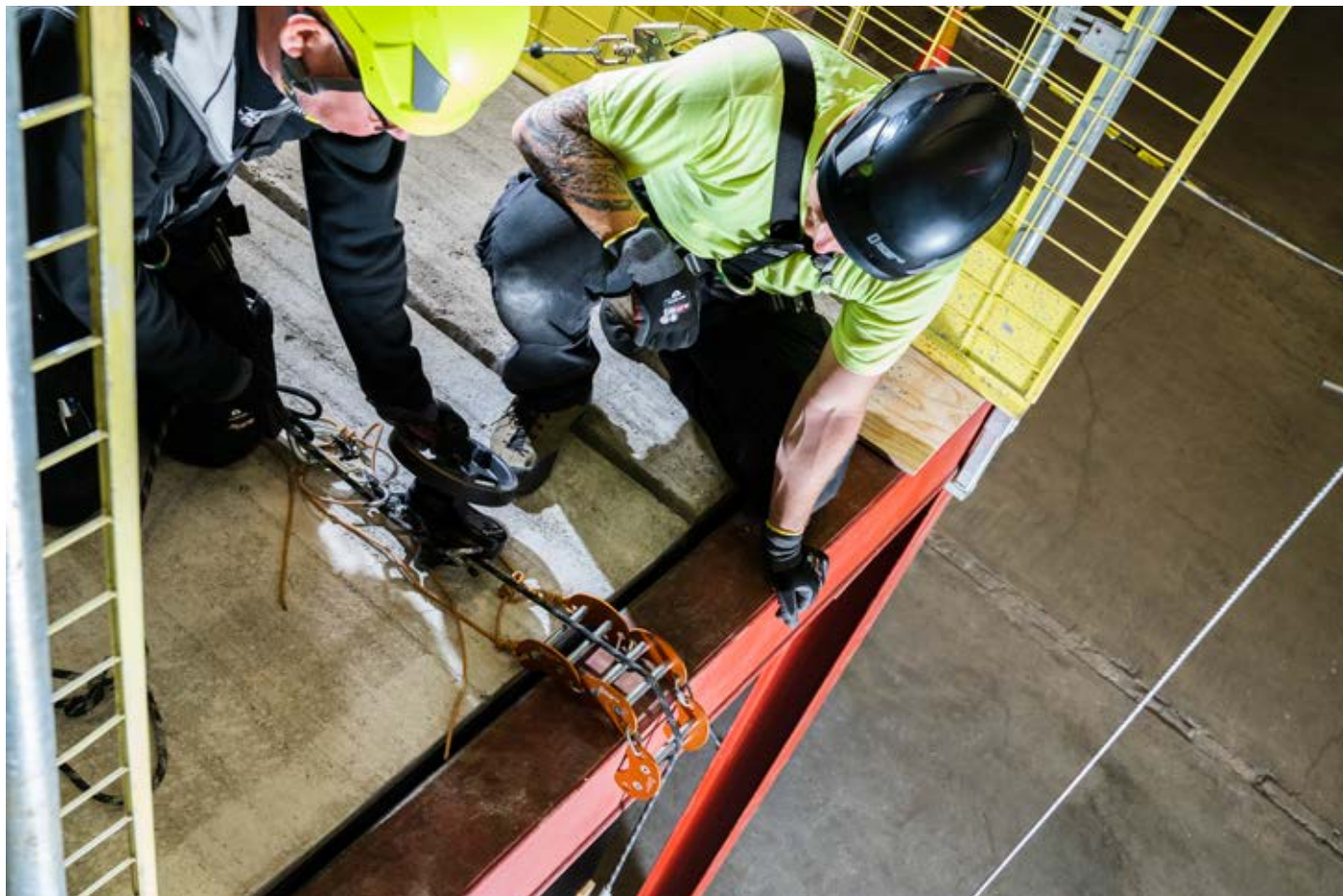
## COLLECTIVE FALL PROTECTION – BASIC

The training provides a basic understanding of collective fall protection, laws and regulations, overall product knowledge and how different fall protection situations can be solved with the right products. You learn to work safely when constructing and dismantling.

Previous knowledge required: On-line course – Introduction to fall protection (included).  
 Course length: 4 hours.  
 Number of participants: Maximum of 8.  
 Location: SafetyRespect's premises.







# PERSONAL FALL PROTECTION

## RESCUE

How do you rescue someone who has fallen over an edge or from a construction? According to health and safety regulations, the company must have expertise of its own available in order to carry out the rescue within a reasonable time. We provide you with the necessary knowledge and techniques to enable you to carry out evacuation of those in distress or self-evacuation.

Previous knowledge required: Personal fall protection – basic, or equivalent.  
Course length: 8 hours.  
Number of participants: Maximum of 8.  
Location: SafetyRespect's premises (or at the customer's).

## ADVANCED RESCUE

Efficient, safe rescue techniques are a prerequisite for providing rapid, effective help for a person in distress. On this course we go into advanced rescue situations in more detail. Participants will work together in teams to carry out complex rescues.

Previous knowledge required: Personal fall protection – basic, or equivalent.  
Course length: 16 hours.  
Number of participants: Maximum of 8.  
Location: SafetyRespect's premises.







## COMPETENT PERSON

This course is intended for those who are to carry out the regular statutory checks on the company's personal fall protection equipment according to the EN 365 standard. This expertise entitles you to inspect harnesses, lanyards, site lanyards, ropes, helmets, carabiners and other equipment that must be visually inspected by a competent person.

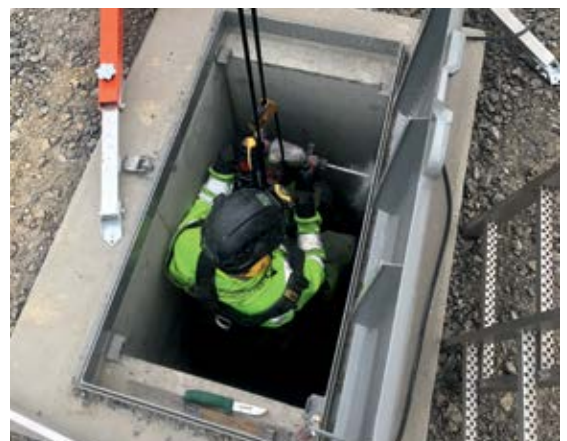
Previous knowledge required: None.  
 Course length: 16 hours.  
 Number of participants: Maximum of 8.  
 Location: SafetyRespect's premises.



## CONFINED SPACES

This course is intended for those who work in confined spaces such as wells, drains, tunnels, culverts or shafts. The training course will teach you, among other things, to understand and be able to carry out accurate assessments of risks, carry out the work ergonomically, evacuate persons in distress and use the safety equipment required.

Previous knowledge required: Personal fall protection – basic, or equivalent.  
 Course length: 8 hours.  
 Number of participants: Maximum of 8.  
 Location: SafetyRespect's premises (or at the customer's).





# COLLECTIVE FALL PROTECTION

## SPECIAL SCAFFOLDING STRUCTURES

The training is a supplementary training course in accordance with AFS 2013:4. It provides a more detailed understanding of special scaffolding structures, such as working platforms and console scaffold systems. You also learn methods for working safely during installation and dismantling, as well as important characteristics affecting assembly, significant change and dismantling.

Previous knowledge required: General or specific scaffolding training.  
Course length: 4 hours.  
Number of participants: Maximum of 8.  
Location: SafetyRespect's premises.



## SAFETY NETS AND SAFETY SCREENS ASSEMBLY AND SAFETY

Basic training in how to install safety nets. The training includes terms, definitions, classification and configurations of safety nets according to the EN1263-1 & 2 standards, safety requirements for assembly and dismantling and what an inspection must include. The course has practical elements, but the training is mainly theoretical.

Previous knowledge required: On-line - Introduction to fall protection.  
Course length: 4 hours.  
Number of participants: Maximum of 10.  
Location: SafetyRespect's premises.



## SAFETY NETS AND SAFETY SCREENS REPAIR, HANDLING AND LOGISTICS

Basic training in how to handle safety nets as individuals, how to inspect them and how to repair them. The training course contains both theoretical and practical elements.

Previous knowledge required: On-line - Introduction to fall protection.  
Course length: 4 hours.  
Number of participants: Maximum of 8.  
Location: SafetyRespect's premises.





## ACADEMY PORTAL

In our on-line training platform, you have access to all material relating to the courses – documentation, your tests and your certificates. Easily accessible and downloadable.

## CUSTOMISED TRAINING

The training courses described here are those belonging to our basic range. We can also develop a customised solution if your company so requires, such as training in another place or in a larger group.

## CERTIFICATES

In all our courses, except the on-line introductory course, participants receive a digital certificate upon passing the course. The certificate is valid for three years.





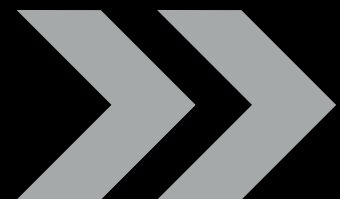
# PERSONAL FALL PROTECTION

## Fall protection harnesses and accessories designed for the construction industry

Our range of personal fall protection includes ready-made kits for different situations in the construction project, for example for work on roofs or from a mobile platform. This makes it easy to choose the right protection.

Besides using our ready-made kits, you can of course also put together your own solution using individual products. All our personal fall protection products are designed for the construction industry and are of high

quality. Our products comply with the most recently updated EU regulations on personal fall protection equipment regarding product requirements, documentation and traceability.









### SLABS AND FLAT ROOFS

With our Construction kit, you get light, convenient fall protection designed for work on slabs or roofs with flat surfaces.

The kit contains a fall protection harness that is easy to put on and take off and is light and easy to work in.

The fall arrest block included has a 6 meter long steel line to enable you to move over larger surfaces without needing to change the anchor point. The block is certified for both horizontal and vertical work as well as work on sharp edges. The kit also includes a carabiner and a 1 meter steel sling. The products are supplied in a sturdy, water-resistant bag that can be carried on the back.

#### CONSTRUCTION KIT

- Harness SR Body
- Block SR IKAR steel 6 m
- Carabiner alu, oval 26 kN ozone black triplock
- Lanyard steel I 100 cm 15 kN
- Gear bag 35 l SR

## MOBILE PLATFORMS

For those who work on a mobile platform, we have tailored a fall protection kit that provides great flexibility and freedom of movement.

Since a platform has a limited work surface, there are no long lines needed for anchoring. This kit includes a fall arrest block with a 1,8 meter long band with a fall indicator. The fall arrest block is certified for both horizontal and vertical work as well as work close to sharp edges.

The harness included is easy to put on and take off and is light and easy to work in. The kit also includes a carabiner hook and a 0,6 meter anchor sling. The products are supplied in a heavy duty, water-resistant bag that can be carried on the back.

### MOBILE PLATFORM KIT

- Harness SR Body
- Block SR IKAR textile 1,8 m
- Carabiner alu, oval 26 kN ozone black triplock
- Sling 60 cm, 22 kN
- Gear bag 35 l SR



## POSITIONING

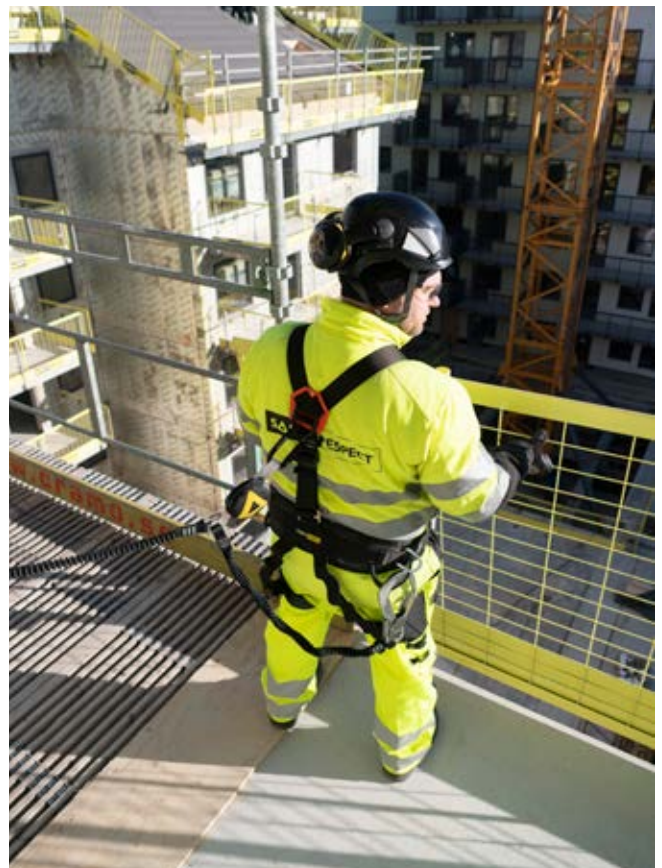
When you need to carry out several different kinds of work at height, such as work on a roof or scaffolding, your equipment must be flexible, comfortable and safe.

If you work hanging outside the construction, the demands on your equipment are slightly different. Then it is mainly a question of locking yourself safely and securely and in the right position.

Our positioning kit includes a well-fitting harness with padding on the waist belt and around the legs. The harness can be adjusted over the shoulders and around the waist and legs. You lock yourself securely with a pair of sturdy ladder hooks with attached fall arresters. The kit also comes with an easy-to-use site lanyard. The products are supplied in a sturdy, water-resistant bag that can be carried on the back.

### POSITIONING KIT

- Harness SR Technic
- Positioning line "Site" 2 m with Locker lock
- Carabiner alu, oval 26 kN ozone black triplock
- Absorber reactor 140 EYE Y 155 cm + 2xK35
- Gear bag 35 l SR







### SLOPING ROOFS

On a sloping roof, a support function is sometimes needed along with the fall protection. The equipment in this kit provides you with that. The products are extremely comfortable whether you're standing on a steep roof or hanging over an edge.

Our Roof Kit includes a harness that can be used both as fall protection and for rope work. The harness is well-fitting and can be adjusted over the shoulders and around the waist and legs. It also has padding in the waist belt and around the legs.

The Roof line with Back up is fitted with a self-locking device that protects you in the event of a fall. The lock also allows the length of the rope to be easily adjusted. The kit also includes a carabiner and a 1 meter steel sling. The products are supplied in a sturdy, water-resistant bag that can be carried on the back.

#### ROOF KIT

- Harness SR Technic
- Roof line with Back up, 20 m
- Lanyard steel I, 100 cm 15 kN
- Gear bag 35 l SR



## RESCUE

When working at height, there must be a working rescue plan. With our rescue kit, you know you have equipment that is safe and easy to use.

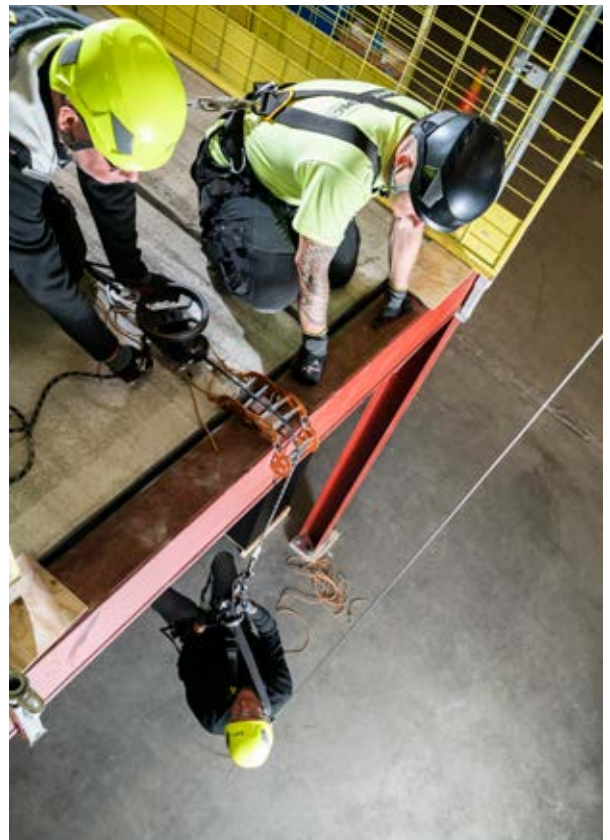
Our rescue equipment is easy to use, no matter what kind of situation you're facing, whether it is a platform, a slab edge or a roof.

The equipment is vacuum-packed to make the annual inspection easier. As long as the packaging is sealed and the vacuum is maintained, you know the equipment is safe to use. You can easily do the inspection yourself.

You choose whether you want the rescue kit supplied in a bag or in a plastic box. The bag is easy to carry, for quick action, and is made of a sturdy, waterproof fabric. The plastic box is more impact resistant, with a long lifespan.

### RESCUE KIT WITH BAG/CASE

- SR Rescue device Sealpac
- Gear bag 50 I SR or Case Mark XXL
- SR Rope protector







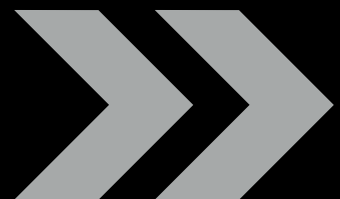
# COLLECTIVE FALL PROTECTION

## Fall protection solutions for construction projects of all types

We are constantly developing new products in collective fall protection in order to meet our customers' need for safe construction sites. We have solutions for most situations where there is a risk of falling.

We have a wide range of collective fall protection products and are constantly developing new solutions for different construction methods. Our products are easy to use, without compromising

on safety. On the following pages we show our collective fall protection solutions based on the various situations involving a risk of falling that exist on a construction site.





## CONTENTS

Slab edges	32
Balconies	34
Wall openings	35
Floor openings and shafts	36
Stairs	38
Steel structures	40
Long spans	42
Wood structures	43
Prefabricated materials	44
Concrete casting	48
Casting in site	49
Roofs and facades	50
Hall constructions	54
Falling objects	58
Scaffoldings	63
Blocking	64
Attachments	66
Transportation	67





## SLAB EDGES

Slab edges are present everywhere and are a common cause of fall accidents. Edge protection can be installed on the slab or on the outside of the slab edge. If there are columns, they can be an alternative attachment of the edge protection. For more information, see solutions for columns/beams.

Our solutions can easily be installed on all materials and provide flexibility when needed, as, for example, when walls are to be installed. Usually Socket base is installed at the slab edge for attaching the edge protection. The Post 1,3 m are installed in the socket base then barriers are attached.

When the barrier is in its lowest position it seals against the slab, and it can easily be raised on the post for various kinds of work at the slab edge.

### PRODUCTS

- Socket base
- Post foot
- Vertical bracket
- Post 1,3 m
- Barrier 1,3, 1,95, 2,6
- Barrier bracket 360







## PREFABRICATED CONCRETE SLABS

When prefabricated concrete slabs are used in building constructions Socket base is usually installed at the slab edge for attachment of edge protection. In the Socket base Post 1,3 m is installed and thereafter Barrier 2,6. The Barrier can be raised in one simple operation on the post up to a height of 310 mm above the floor structure, without decreased safety. This creates conditions for joint grouting, casting and other common work tasks without any need of uninstalling the edge protection.

### PRODUCTS

- Socket base
- Post 1,3 m
- Barrier 1,3, 1,95, 2,6
- Cast protection for Socket base



## INSTALLATION OF FLOOR STRUCTURE

When installing prefabricated concrete slabs a movable edge protection is required for safe blockage for other construction personnel. For this the Ground Support Plate is used together with Socket base, Post 1,3 m and Barrier 2,6. The Barriers then work as effective and safe blockage while the installation of prefabricated concrete slabs is carried out by workers with personal fall protection equipment.

### PRODUCTS

- Ground support plate
- Socket base
- Post 1,3 m
- Barrier 1,3, 1,95, 2,6
- Personal fall protection equipment





## BALCONIES

The ordinary attachment for the balcony railing can be used for attaching edge protection. Here you can use Balcony bracket or Vertical bracket. After this, Post 1,3 m is installed together with Barrier 2,6, Barrier 1,3 or Barrier 1,95 in order to adapt the edge protection according to the dimensions of the balcony.

### PRODUCTS

- Balcony bracket
- Vertical bracket
- Post 1,3 m
- Barrier 1,3, 1,95, 2,6



## CLAMPS ON BALCONY EDGES

Clamp 300 can be installed on balcony edges as brackets for the edge protection. This clamp is suitable for a balcony thickness of 300 mm and has an integrated bracket for Post 1,3 m. Depending on the dimensions of the balcony, Barrier 2,6, Barrier 1,3 or Barrier 1,95 is then installed on the post.

### PRODUCTS

- Clamp 300
- Post 1,3 m
- Barrier 1,3, 1,95, 2,6



## WALL OPENINGS

The wall openings should be secured with edge protections. Wall brackets on each side of the opening together with Adjustable link bars should be used. The Adjustable link bars are available in three different sizes for openings from 0,5 metres up to 2,5 metres. This solution makes it easy to remove and put back the edge protection when various types of work is to be carried out, and it also leaves space for different types of lead-throughs.

### PRODUCTS

- Wall bracket
- Adjustable link bar 2,4-3,5 m
- Adjustable link bar 1,5-2,5 m
- Adjustable link bar 0,9-1,5 m
- Adjustable link bar 0,58-0,78 m



## BARRIERS AT WALL OPENINGS

Wall brackets and barriers can quickly and easily secure wall openings. Using this attachment there is no need for posts and attachment in the slab. The solution makes it simple and fast to open and close the edge protection. Casting is facilitated and one advantage is that repair of edge protection attachments are not required. This solution creates a tighter edge protection in comparison to using adjustable link bars. It is quick and easy to install and uninstall when various kinds of work task are to be carried out.

### PRODUCTS

- Wall bracket
- Barrier 1,3, 1,95, 2,6
- Barrier bracket 360



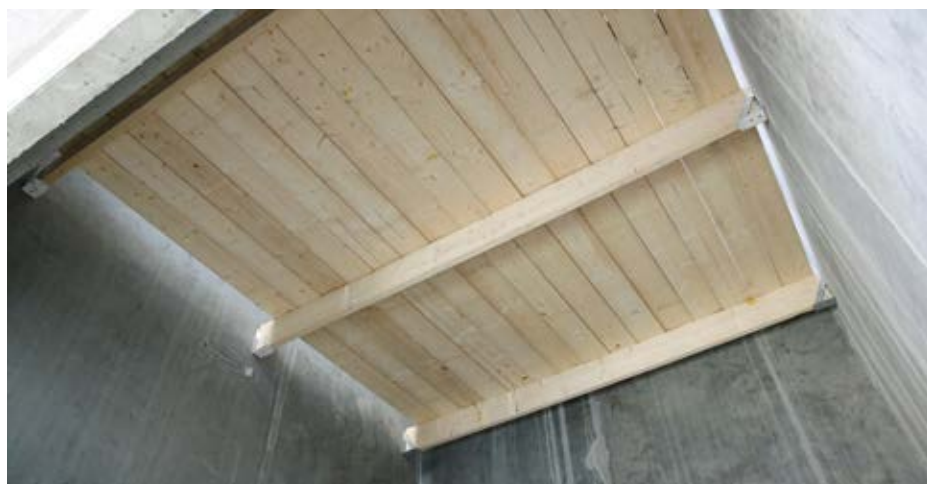


### FLOOR OPENINGS

Openings in slabs and shafts are sometimes changed and must be secured against falls during the construction process. Floor openings should be considered as an open slab edge and be provided with a suitable attachment such as Socket base, Vertical bracket, etc., and Post and Barrier. Barrier bracket 360 should be mounted in the corners as an attachment for Barriers in all directions.

#### PRODUCTS

- Socket base
- Post 1,3 m
- Barrier bracket 360
- Barrier 1,3, 1,95, 2,6



### WORKING DECKS IN SHAFTS

When you want to create a platform/working deck in a lift shaft you should use Plateau consoles that are fastened to the inside of the shaft wall. When the plateau consoles have been installed, grade timber of correct dimensions should be used to create the platform.

#### PRODUCTS

- Plateau consoles
- Console tap



## SHAFT OPENINGS

Before the elevator is installed in the shaft the opening should be protected against falls. It is also important to protect the elevator installer and other professionals working in the shaft against falling objects. Shaft openings can quickly and easily be secured using Wall bracket and Barrier. The solution works as a gate as well. With this attachment there is no need for posts and customary attachment on the slab. This gives great advantage as repair of edge protection attachments is not required on the slab.

### PRODUCTS

- Wall bracket
- Barrier bracket 360
- Barrier 1,3, 1,95, 2,6



## BUILDING HOISTS AND STAIR TOWERS

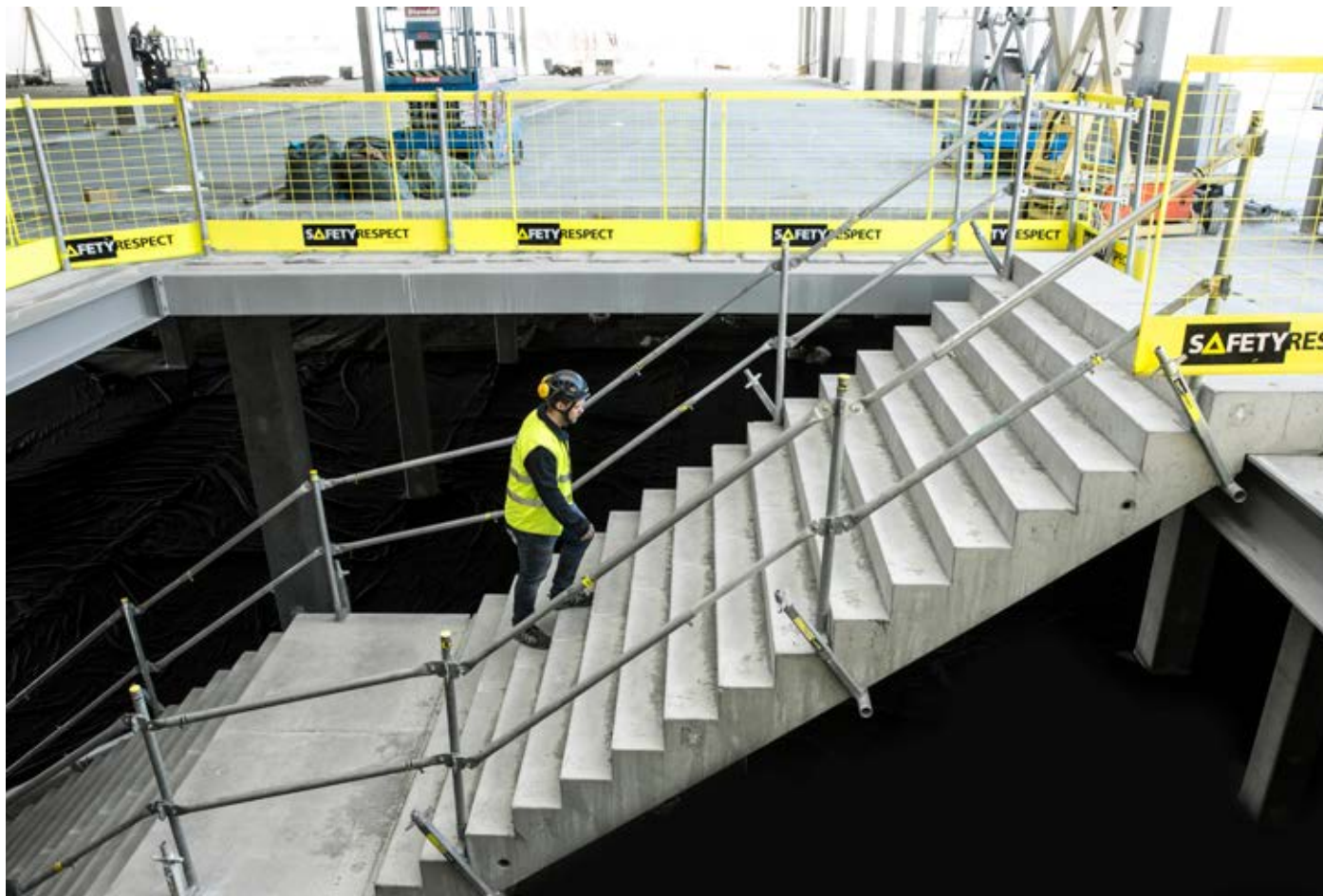
It is important to create access to slabs at the working site in connections between building hoists and stair towers. SafetyRespect's products are compatible with most common scaffold brands and stair towers.

### PRODUCTS

- Barrier bracket wedge coupler
- Post 1,3 m
- Barrier 1,3, 1,95, 2,6
- Adjustable link bar
- Double coupler swivelling



## STAIRS



## STAIRS

A safe edge protection should immediately be installed in stairs that are being used, or the stairs should be blocked. As stairs are constantly used in the construction project it is important to use an edge protection system that is safe and can be handled easily. Attachments for posts can be installed before installing prefabricated stairs.

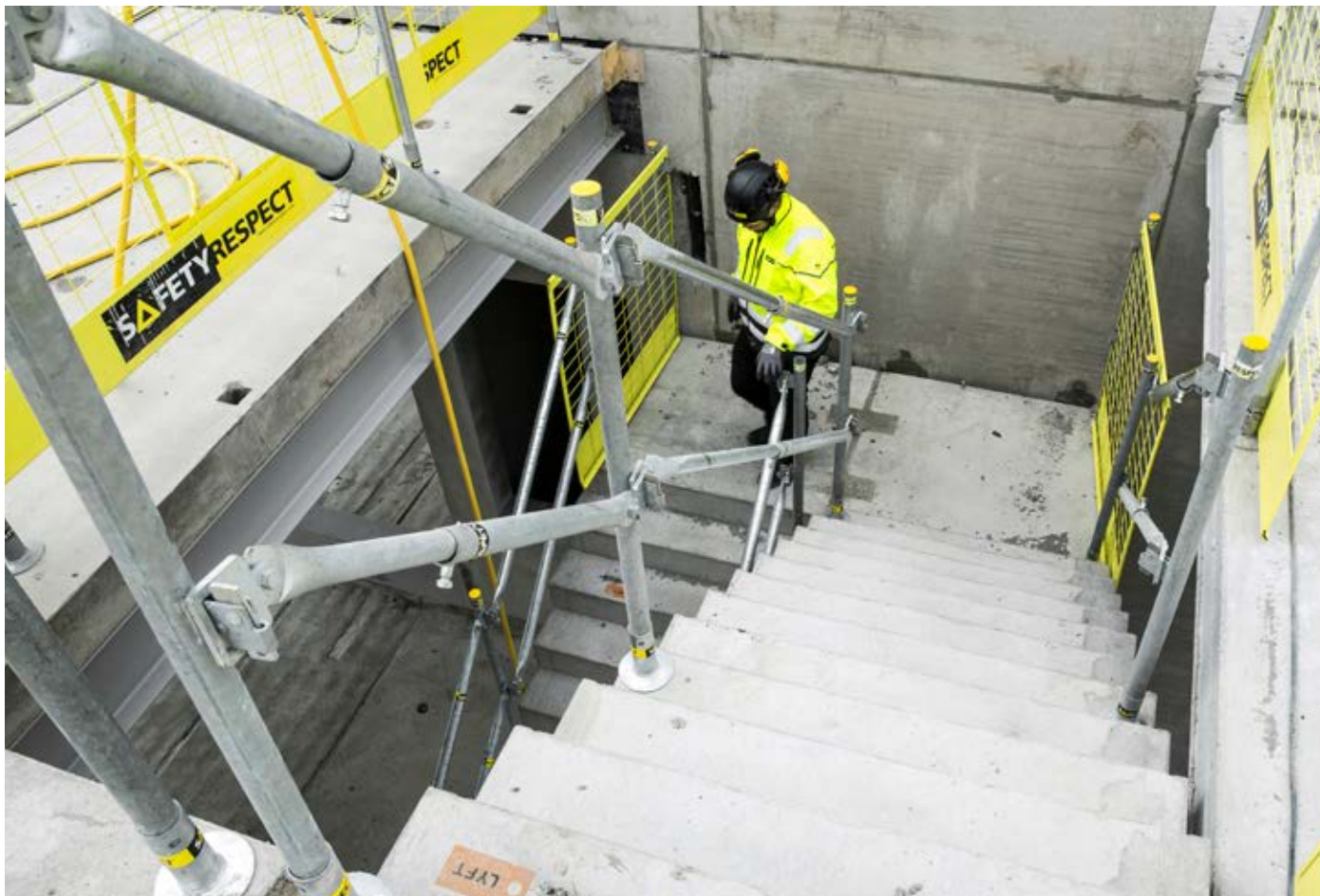


## CLAMP ON STAIRS

By using Clamp 550 the process of making holes is eliminated when installing edge protections. The clamp can be swivelled and turned around and be installed in one simple operation without damaging the delicate surface. The clamp has an integrated bracket for Post 1,3 m and adjustable link bars are installed on the posts.

### PRODUCTS

- Clamp 550
- Post 1,3 m
- Adjustable link bar
- Barrier bracket 360



## SOCKET BASE ON STAIRS

The Socket base can be used as attachment of edge protection in stairs. The Socket base has an integrated bracket for Post 1,3 m. Adjustable link bars are installed on the posts.

### PRODUCTS

- Socket base
- Post 1,3 m
- Adjustable link bar
- Barrier bracket 360



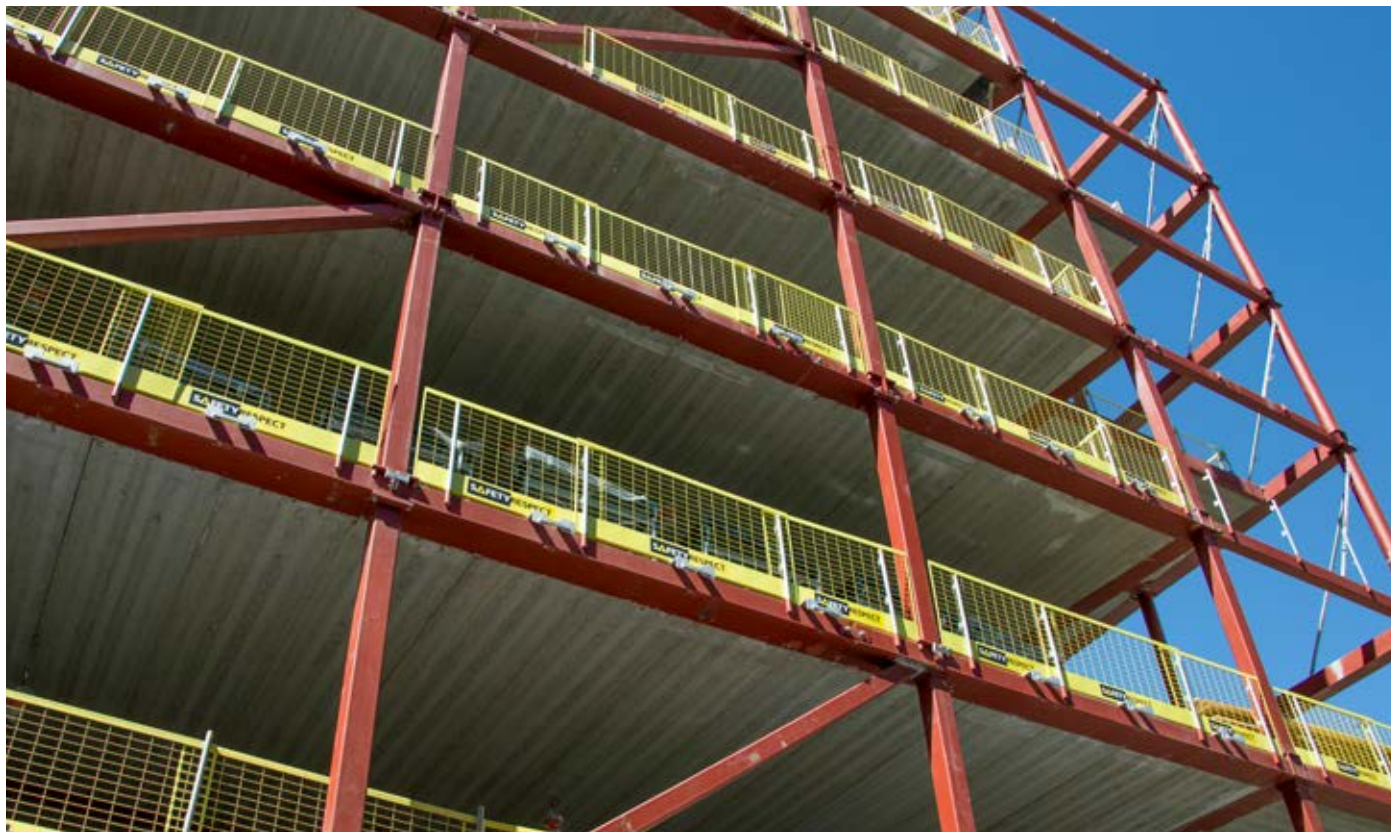
## STAIR BRACKET ON THE STRING

As an attachment point for the bracket the regular cast in sockets in stairs can be used. A Stair bracket with spacers makes it possible to let the protection in the stairs during the whole construction period. All kinds of work can be carried out with the protection in place, even the final painting.

### PRODUCTS

- Stair bracket
- Post 1,3 m
- Adjustable link bar
- Barrier bracket 360





### PRE-INSTALLED ATTACHMENTS

When steel beams are used in the building construction a Welding socket with integrated post lock should be designed as an attachment of edge protection. In these cases the Welding socket is welded according to the instructions when producing the steel beams. When the beam has been lifted in place Post 1,3 m and Barrier 2,6 are mounted. The attachment of the edge protection will become both safer and faster with a pre-fabricated attachment such as this one.

#### PRODUCTS

- Welding socket
- Post 1,3 m
- Post 1,5 m alu
- Barrier 1,3, 1,95, 2,6







## CLAMP ON STEEL BEAMS

On steel beams with a flange a Steel beam clamp can be installed in order to quickly create an attachment for the edge protection. This creates a free surface on the slab that can be used for other work tasks. The clamp is designed with gripping jaws for the steel beam profile. The steel beam clamp has an integrated attachment for the post. Barrier 2,6 is installed directly onto the post lock and its height can easily be adjusted in order to facilitate different work tasks.

### PRODUCTS

- Steel beam clamp
- Post 1,5 m alu
- Barrier bracket wedge coupler
- Barrier 1,3, 1,95, 2,6



## THREADED ATTACHMENTS

For steel structures we can provide adapted edge protection solutions with various pre-fabricated attachments. Making of holes and threading, or mounting of Threaded welding plates, can be carried out when manufacturing the steel beams. If the Flex facade bracket is used the distance of the edge protection to the slab edge can be adjusted, for example when installing walls, windows and more. For protection near the edge, the Balcony bracket or Vertical bracket can be a suitable solution. All these solutions creates a free working space on the slab.

### PRODUCTS

- Flex facade bracket
- Balcony bracket
- Vertical bracket
- Post 1,3 m
- Post 1,5 m alu
- Barrier bracket wedge coupler
- Barrier 1,3, 1,95, 2,6





## LONG SPANS

Making use of available columns or other structure elements for attachment enables work tasks on the slab to be completed freely and efficiently. The edge protection will be suspended on the columns above the working surface at a correct height, considering future work to be carried out. SafetyRespect's Barrier alu 3 m can handle large spans and makes possible installation between columns. The Barriers are continuously jointed with Pipe joints or Pipe couplings without using any attachment on the slab. The Barriers can be raised so that they create a completely free working space required when applying a new surface layer, casting, etc.

### PRODUCTS

- Barrier alu 3 m
- Joint pin
- Pipe coupling
- Attachment



## COMPRESSION POST BETWEEN SLABS

Utilizing the Compression post together with Barrier and Containment net a fully covered opening can be achieved. The containment net stops debris and material from entering or exiting the floor and the Barrier acts as collective fall protection. The Compression post is easy to install by extending the inner pipe to the ceiling and then activating the compression function by a foot pedal.

### PRODUCTS

- Compression post 2,2-3,5 m
- Barrier bracket wedge coupler
- Frame barrier holder
- Barrier 1,3, 1,95, 2,6





## WOOD STRUCTURES

In building constructions with wooden beams and columns the edge protection can be mounted with various systems and solutions, for example with Flex facade brackets. The facade bracket is directly mounted on a wooden beam with the required wood screws. When a roof protection is required, a Hall system can be installed in the wood structure. The attachment is then done by using rods.

### PRODUCTS

- Facade bracket
- Hall system
- Wood screw
- Post 1,3 m
- Barrier 1,3, 1,95, 2,6



## WOOD BEAMS

In building constructions that consists of wooden beams, the Wood beam clamp can be used as attachment for the edge protection. The bracket has integrated post lock and fits beam dimensions of 45 x 120 - 220 mm. It is designed for a flexible installation and can easily be adjusted as needed. When the bracket has been installed on the beams, Post 1,3 m and Barrier 2,6 are mounted.

### PRODUCTS

- Wood beam clamp
- Post 1,3 m
- Barrier 1,3, 1,95, 2,6





## EDGE PROTECTION FOR PREFABRICATED ELEMENTS

Edge protection solutions that are planned in consultation with both the product management and designers create the best conditions regarding economy, time and safety. Already at the designing stage we investigate things such as attachments for the edge protection in order to find solutions to the work tasks that are to be carried out by the different professional groups of people or subcontractors.



## PRE-INSTALLATION

In order to create a safe working site and save time the edge protection can be installed on prefabricated elements before they are lifted in place. For example, attachments, Post 1,3 m and Barrier 2,6 can be installed already on the lorry on which the prefabricated elements are transported or on the ground before hoisting them in place. The edge protection will then be in place already when the next working phase is to be started on the building. Installation is fast and safe, and creates better economy through more efficient use of the cranes.

### PRODUCTS

- Socket base
- Vertical bracket
- Post 1,3 m
- Barrier 1,3, 1,95, 2,6





## LATTICE GIRDER ELEMENT

Precast sockets that are already casted into a prefabricated lattice girder elements at the concrete factory offers fast and safe mounting of edge protection. The Precast socket has an integrated post lock and is casted into the elements at the factory. Protection sleeve is mounted at the desired height at the working site, and is adapted to the casting height/slabs thickness. Post 1,3 m and Barrier 2,6 are installed either before or after the prefabricated element is lifted in place. The Barriers can easily be lifted to the desired height when casting. No tools are needed. The products are tested in accordance with EN13374 and meet the dimensioning requirements according to the Euro Code.

In constructions with prefabricated slab decks the Precast bracket can be installed onto the frameworks edge with the pre-planned Precast edge holder. A dialogue takes place between the manufacturer of the prefabricated material and SafetyRespect's technical division as to the edge protection solution and positioning of precast edge holders, etc.

### PRODUCTS

- Precast socket
- Protection sleeve for Precast socket
- Precast bracket
- Precast edge holder
- Post 1,3 m
- Barrier 1,3, 1,95, 2,6
- Frame barrier alu 1,3, 1,95, 2,6
- Frame barrier holder
- Adjustable link bar







## SANDWICH WALLS

Sandwich walls often have low bearing capacity in the outer sheet, and sometimes there is no outer sheet, only insulation. In order to minimize the work of installing edge protection, WI brackets can be cast into the framework with customized spacing for the insulation layer. The bracket is configured specifically for each individual project to fit the wall structure and casting method. Outside the insulation, the Flex vertical beam is used for a close fit for the edge protection. When the edge protection is disassembled, the distances are also removed and a minimal completion of the insulation remains to maintain the insulating properties of the wall.

### PRODUCTS

- WI bracket
- Flex vertical beam
- Post 1,3 m
- Post 1,5 m alu
- Barrier 1,3, 1,95, 2,6





## WALL ELEMENT WITH CAST IN SOCKET

Cast in socket M16 is an attachment that is designed in a wall element that enables fast and safe installation of the edge protection at the working site. A dialogue takes place between the manufacturer of the prefabricated material and SafetyRespect's technical division as to recommendations of edge protection solutions, positioning of cast in sockets, pull out loads, laws and regulations.

### PRODUCTS

- Cast in socket M16
- Recommended bracket
- Post 1,3 m, Post 1,5 m alu
- Barrier 1,3, 1,95, 2,6



## WALL ELEMENT WITH PRECAST SOCKET WALL

The Precast socket wall is an attachment that is designed and cast into the wall element at the factory. This solution creates fast mounting and offers a free working space.



### PRODUCTS

- Precast socket wall
- Post 1,3 m
- Barrier 1,3, 1,95, 2,6



## CONCRETE CASTING



## CONCRETE CASTING

When casting on top of concrete slab structures where Socket base, Post and Barrier are used on the slab it is an advantage to use casting protection. The Barrier can be raised on the post in several steps up to 310 mm with maintained safety as the post locking is fully functional. The Cast protection protects the Socket base against concrete scrap from the casting process.

### PRODUCTS

- Socket base
- Post 1,3 m
- Cast protection for Socket base
- Barrier 1,3, 1,95, 2,6



## FREE WORKING SPACE

Using available columns to attach edge protection creates a free surface on the slab, which is good for work tasks like casting etc. Barrier alu 3 m can handle large spans and makes installations between columns like these possible. The barriers will be suspended on the columns above the working surface at a correct height, and they are continuously jointed with Pipe joint or Pipe coupling without using any attachment on the slab.

### PRODUCTS

- Attachment
- Barrier alu 3 m
- Joint pin
- Pipe coupling





## CASTING IN SITE

With a structure framework cast-in-site there is the possibility of designing attachment points for the edge protection. Socket w rebar with integrated post lock, for example, can be cast into the wall tops in, for instance, house gables, lift- and stair shafts. After this Post 1,3 m and Barrier are installed. Vertical brackets can be installed on the formwork as attachments, followed by Post 1,3 m and Barrier.

In order to be able to build external panel walls from inside the slab Balcony bracket 10 degrees can be installed as an attachment, which gives an inclination of the edge protection by approximately 10 degrees. For other requirements of edge protection such as stairs, window openings, etc., there are several solutions that can be designed and cast in order to facilitate installation of edge protection and to create safer working sites.

### PRODUCTS

- Socket w rebar
- Balcony bracket 10 degrees
- Balcony bracket
- Vertical bracket
- Post 1,3 m
- Barrier 1,3, 1,95, 2,6





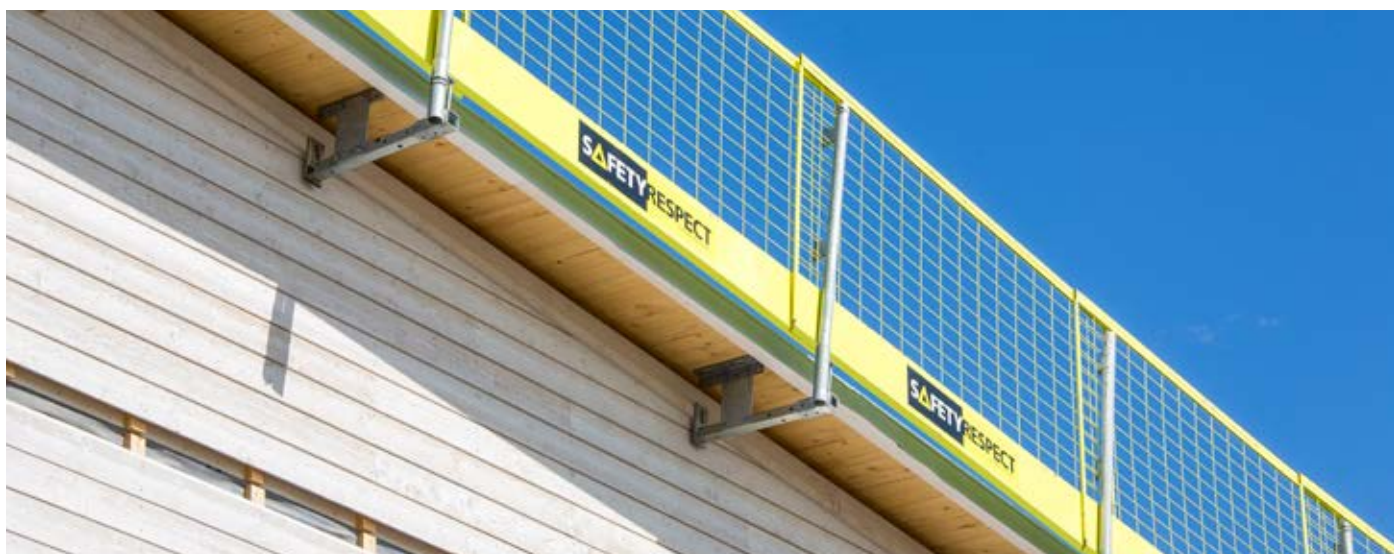


## ROOFS AND FACADES

In order to create a free working space on roofs Flex facade bracket can be used as an attachment of edge protection. The distance between the facade and edge protection can easily be adjusted during ongoing work. Flex facade bracket is available in three different lengths to suit most situations and if the attachments are projected early in the process, the installation is quick and smooth, with high safety. Flex working platform can also be a solution that provides good protection without being in the way of work near the edge of the work surface.

### PRODUCTS

- Flex facade bracket
- Flex working platform
- Post 1,3 m
- Post 1,5 m alu
- Barrier 1,3, 1,95, 2,6



## GABLES

At the gables the Flex gable bracket can be installed as an attachment, which also creates a free working area. The distance between the facade and the edge protection can be adjusted during ongoing work. The attachment can be done in the roof base.

### PRODUCTS

- Flex gable bracket
- Flex working platform
- Post 1,3 m
- Post 1,5 m alu
- Barrier 1,3, 1,95, 2,6



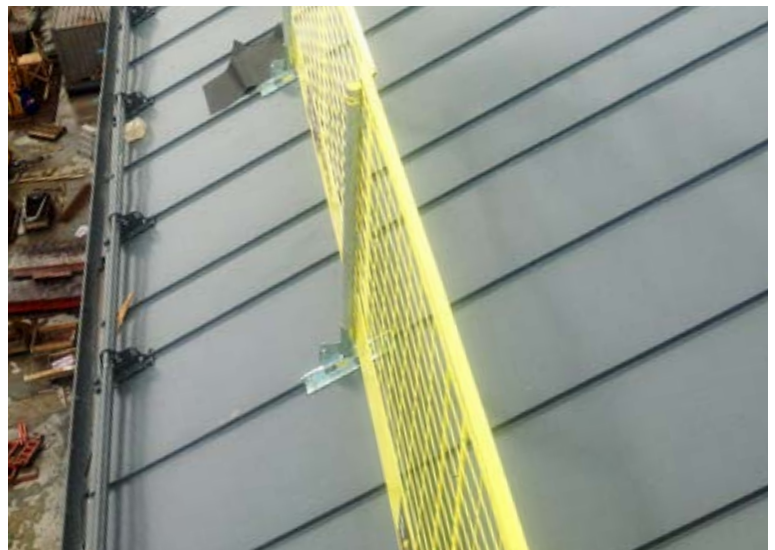


## EAVES

At the eaves, Flex eave bracket can be installed as an attachment for edge protection. This solution enables a free working space and the distance between the facade and edge protection can be adjusted during ongoing work. The bracket is installed with a through bolt in the roof frame and supports even against the facade or the roof frame.

### PRODUCTS

- Flex eave bracket
- Flex eave bracket with counterhold
- Flex working platform
- Post 1,3 m, Post 1,5 m alu
- Barrier 1,3, 1,95, 2,6



## ROOF BASE AND TIN PLATED ROOF

On roof base and cover with double seam the Standing seam bracket can be used as attachment for the edge protection. The bracket can be adjusted to four positions for roof inclinations from 5 to 40 degrees. The Standing seam bracket is installed so that the seam lock gets a grip under the seam. The sheets must be of good quality and be well fastened against the roof construction. On roof bases the Standing seam bracket is installed above the roof frame with wood screws.

### PRODUCTS

- Standing seam bracket
- Post 1,3 m
- Barrier 1,3, 1,95, 2,6





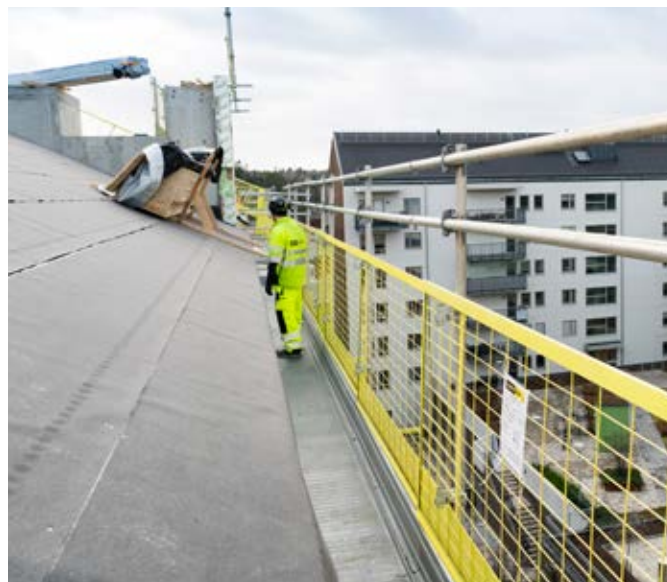
### WORKING PLATFORM AT FACADES AND ROOFS

When working on facades and roofs Flex working platform can be installed to create a safe working area. The system is both faster to install and more flexible than traditional scaffolds. The system can be adapted to most situations. Installation is mainly done by SafetyRespect in consultation with the customer.

The working platform has a type approval certificate as a scaffold issued by SP (Technical Research Institute of Sweden) in load class 2 and 3 according to AFS 1990:12.

#### PRODUCTS

- Flex working platform
- Post 1,3 m
- Post 1,5 m alu
- Post 2,0 m alu
- Barrier 1,3, 1,95, 2,6
- Double coupler stationary (wedge)
- Alu pipes











## HALL CONSTRUCTIONS

SafetyRespect Hall system is an edge protection developed for flat or low inclined roofs, for example constructions for industry, sports and commerce. The system has several attachment alternatives and can handle long spans between the attachment points. The system consists of aluminum barriers and smart components that offer rapid and safe installation.

Hall constructions have a relatively short construction process. That is why it is important that the edge protection is pre-planned, adjustable, can be quickly installed and offers satisfactory protection during the whole building process. The system is developed to suit the different types of work carried out.

The system creates a safe working site when installing load-carrying sheets, roof insulation, waterproof layer, etc. Wall panels and facade elements can be installed with the edge protection

in place. The flexibility both in height and sideways, offers solutions that traditional edge protection does not have. The edge protection can be adjusted/swivelled, which enables installation of gutters and similar devices at the eaves. The aluminum barriers are attached to posts with the post locking and are jointed continuously with pipe joints or couplings.

The edge protection is attached on the outside of the columns. Welding nuts are delivered to the manufacturer of the framework and welded onto the steel columns. The positioning of welding nut is designed in consultation with SafetyRespect. When the edge protection is installed on the columns the working area is totally free to be used for all other work, such as placing the load-carrying sheets, roof insulation, waterproof layer, etc. No damage is thus done to already finished surfaces. The welding nuts are covered by the pilasters between the facade panels when they are installed.



## ADJUSTABLE EDGE PROTECTION

Adjustable post holder is used when the edge protection needs to be adjusted to different locations during the course of a project. A starting position can be set during roofing and the adjustment is easily done when wall elements are to be mounted, or when working with crown lights, hangers etc. The possibility of adjustment allows the safety to be maintained at the same high level throughout the construction process.

### PRODUCTS

- Barrier alu 3 m
- Adjustable post holder
- Post 1,3 m
- Attachment
- Rod 20 complete 0,5 m, 1,0 m
- Barrier bracket wedge coupler
- Double coupler swivelling
- Joint pin
- Coupler with bracket





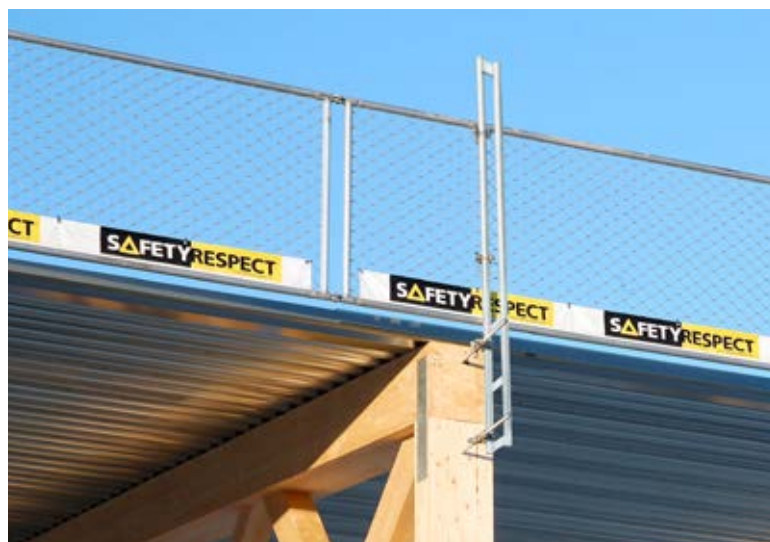


### INSTALLATION WITH STRAIGHT POSTS

A quite common building method of hall constructions is that the wall elements are placed past the roof and create a border, something that requires indoor drainage. As to the edge protection a solution using a straight post installed to the attachment may be the best alternative. We can offer several different post options to handle large spans.

#### PRODUCTS

- Barrier alu 3 m
- Post 2,5 m alu
- Attachment
- Rod 20 complete 0,5 m, 1,0 m
- Barrier bracket wedge coupler
- Double coupler swivelling
- Joint pin
- Coupler with bracket







## ATTACHMENTS

The Hall system offers several attachment alternatives that can be used for steel, concrete and glued laminated timber. The attachment is carried out either in the middle of or on the side of the beam, between two columns placed close to each other, direct in wooden beams or with casting sleeves. The brackets can be fastened either with bolts if they are to be removed at a later date, or be welded in place as permanent brackets to be used for future maintenance of roofs and facades.

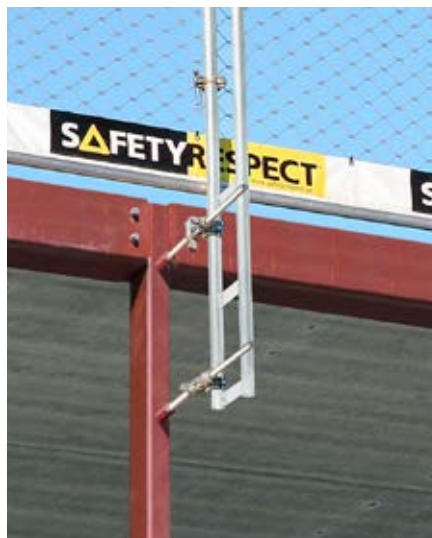
### PRODUCTS

- Pre-cast attachments
- Weld nut
- Rod 20

Attachment concrete



Attachment steel



Attachment wood







## PROTECTION AGAINST FALLING OBJECTS

SafetyRespect Safety fan system is a complement to SafetyRespect's ordinary edge protection system and is used to catch falling materials and objects that may constitute a risk for injuries to people and damage to objects. The system can be installed without any need of cranes and is designed to be installed on floor structures, scaffolds and walls. More information is available in our user's manual.

### PRODUCTS

- Safety fan slab
- Safety fan wall
- Safety fan scaffolding



- Protects people, facades and the immediate area of the building site.
- Catches and retains falling objects.
- Protects the public in, for example, city environments.
- Can be installed in all existing situations at a construction site, on floor structures, scaffolds and walls.
- Can be directly installed from the work area without using any cranes.
- Can easily be moved and adapted throughout the construction project.
- Easy to fold to a vertical position in order not to interfere with cranes.





## SAFETY FAN FOR SLABS

SafetyRespect Safety fan system for slabs is a complement to our edge protection system and is used to catch falling material and objects (not people) that may constitute a risk for injuries to people and damage to objects. This system can be installed without any need of cranes and designed to be installed on floor structures, with the possibility of directly integrating SafetyRespect's edge protection system.

### PRODUCTS

- Top bracket
- Bottom support
- Alu beam 1500
- Alu pipe 6 m
- Net safety fan 3 x 6 m
- Double coupler swivelling
- Coupler 48-50
- Plate 140x140





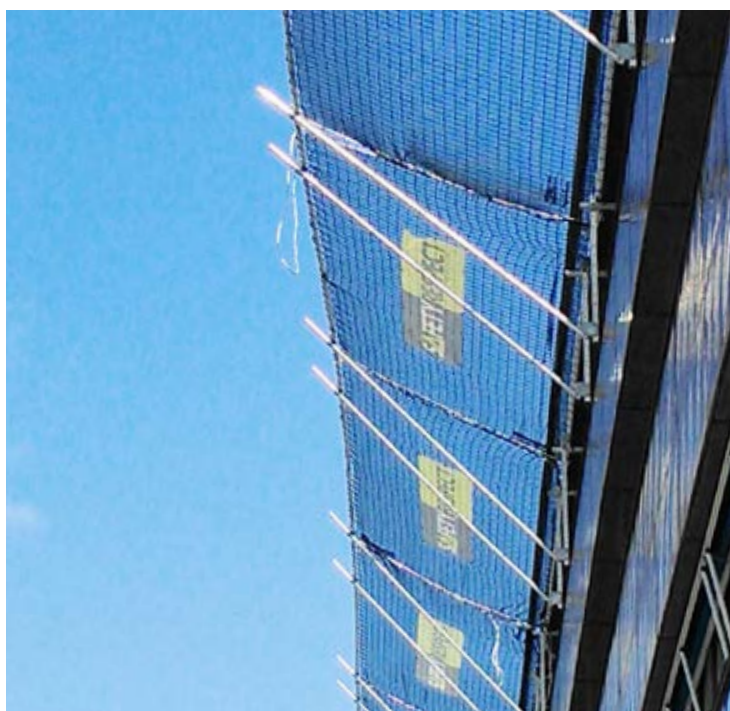


### SAFETY FAN FOR WALLS

SafetyRespect Safety fan system for walls is a compliment to our edge protection system and is used to catch falling material and objects (not people) that may constitute a risk for injuries to people and damage to objects. This system is adapted to be installed on a vertical surface without any need of cranes and with the edge protection mounted freestanding on the working area.

#### PRODUCTS

- Alu beam 1500
- Net safety fan 3 x 6 m
- Plate 140x140
- Alu pipe 6 m, 4 m
- Coupler bracket
- Keyhole bracket







## SAFETY FAN ON SCAFFOLDING

SafetyRespect Safety fan system for scaffolding is a complement to our edge protection system and is used to catch falling material and objects (not people) that may constitute a risk for injuries to people and damage to objects. This system is adapted to be installed on most existing scaffold brands without any need of cranes and with the possibility of integrating SafetyRespect's edge protection system. Pay attention to the increasing loads on the scaffolding.

### PRODUCTS

- Net safety fan 3 x 6 m
- Alu pipe 6 m
- Double coupler
- Double coupler swivelling







### FALL PROTECTION NET

The Fall protection net is available in a variety of sizes and designs and is used to catch both people and material. The attachment is done with a rope or a Net claw in, for example, a roof girder construction. The fall protection net offers both flexibility and safety, which results in increased efficiency when working at height. When positioned correctly the protection net is also used to catch falling objects such as waste material, tools, building parts, equipment, etc. The protection net also reduces the feeling of great height, which means that possible fear of heights of the workers are reduced. This creates a feeling of safety with increased efficiency as a result.

#### PRODUCTS

- Fall protection net 3 x 6 m
- Fall protection net 8 x 10 m
- Fall protection net 8 x 12 m
- Fall protection net 10 x 12 m
- Net claw double  
(Grippa 22 mm or 50 mm)







## EDGE PROTECTION FOR SCAFFOLDS

SafetyRespect's edge protection system is compatible with most scaffold brands. Our products and solutions with couplings, barriers and posts can be combined with scaffolds in order to achieve safety on platform levels, slabs, access points and roofs. As to technical matters, please contact SafetyRespect.

### PRODUCTS

- Barrier bracket wedge coupler
- Barrier 1,3, 1,95, 2,6
- Strap 0,6 m
- Safety fan scaffolding







## BLOCKING

Creating safe access routes and temporary blocking is an important work environment task. The Ground support plate can be used in combination with SafetyRespect's edge protection products in order to create blockings, safe access routes, etc. Socket base, Post 1,3 m and Barrier 2,6 or Adjustable link bars are installed on the ground support plate. This solution can be quickly installed and is easy to move and adjust when required.

We also have a Guard rail system designed for demanding environments. The system consists of Guard rail, Barrier and Fence in different lengths with several types of ground support. See next page for more information.

### PRODUCTS

- Ground support plate
- Socket base + Post 1,3 m
- Barrier 1,3, 1,95, 2,6
- Guard rail 1,8 m, 2,5 m, 3,2 m
- Barrier 1,8 m, 2,5 m, 3,2 m
- Fence 1,8 m, 2,5 m, 3,2 m
- Flat foot
- Angle foot
- Block foot
- Toe board holder







## GUARD RAIL SYSTEM

SafetyRespect's Guard rail system is a stable and fast-mounted system for blocking and temporary enclosures, designed to meet demanding environments. The Guard rail system is available in three variants, Guard rail, Barrier and Fence, all in different lengths. They can easily be connected by integrated hooks and loops, and set at different angles.

The system consists of several interchangeable parts such as three models of ground support and a toe board holder. Completion can be done retrospectively to accommodate specific needs.

The Guard rail system can be used as temporary blocking in traffic environments, on construction sites and at events etc. The system is designed for ergonomic and cost-effective handling. It can also be equipped with reflexes for increased visibility.

The products are available as hot dip galvanized, and galvanized and powder coated. We also offer custom profiling with powder coating in desired color and logotype.

### PRODUCTS

- Guard rail 1,8 m, 2,5 m, 3,2 m
- Barrier 1,8 m, 2,5 m, 3,2 m
- Fence 1,8 m, 2,5 m, 3,2 m
- Flat foot
- Angle foot
- Block foot
- Toe board holder







## ATTACHMENTS FOR BRACKETS



### Concrete screw

- Hilti HUS3-H 10x90  
Art. no. 2079914
- Hilti HUS3-H 10x150  
Art. no. 2079918
- Hilti HUS V 10x95  
Art. no. 2079943
- Hilti HUS V 10x105  
Art. no. 2079944



### Impact anchor

- Impact anchor M16  
Art. no. 919110
- Double-threaded M16  
Art. no. 919111



### Wood screw

- WFD 12 x 100 mm  
Art. no. 1931095
  - WFD 12 x 120 mm  
Art. no. 1931096
- Available in several lengths.





## TRANSPORTATION AND WAREHOUSING

It is important that the logistics at a construction site function well and that the edge protection is easily accessible when required. Our products are delivered in stacking stillages that minimise the area needed. The stillages can be lifted either by forklift or crane. Lifting instructions are available.

### PRODUCTS

- Box stillage
- Post stillage
- Barrier stillage 2,6
- Barrier stillage vertical





**△ STANDARD SYSTEM**



**SOCKET BASE**

Art. no. 912110

- Integrated post lock.
- Several bolt alternatives.
- Hot dip galvanized.
- Cast protection Art. no. 911109.
- Weight 1,0 kg
- 150 pieces delivered in stacking box stillage.



**POST FOOT**

Art. no. 912105

- Integrated post lock.
- Several bolt alternatives.
- Hot dip galvanized.
- Cast protection Art. no. 911140.
- Weight 1,1 kg.
- 100 pieces delivered in stacking box stillage.



**POST 1,3 M**

Art. no. 911110

- Double integrated barrier locks.
- Integrated post lock.
- Hot dip galvanized.
- Weight 3,6 kg.
- 100 pieces delivered in stacking stillage.



**POST 1,5 M ALU**

Art. no. 911116

**POST 2,0 M ALU**

Art. no. 911117

- Aluminum pipe 48,3 x 4,0 mm.
- Integrated post lock.
- Weight 3,2 kg.
- 100 pieces delivered in stacking stillage.



**BARRIER 1,3**

Art. no. 913121

- Can be easily raised and lowered on the posts.
- Zinc plated and powder coated.
- Stable frame construction.
- Integrated toe board 260 mm.
- Weight 10,8 kg.
- 46 pieces delivered in stacking stillage.



**FRAME BARRIER 1,3 ALU**

Art. no. 913151

- Easy installation without tools.
- Easily raised and lowered on posts.
- Integrated toe board 150 mm.
- Welded frame construction.
- EN13374 – Class A.
- Weight 5,7 kg.
- 27 pieces delivered in stacking stillage.



**BARRIER 1,95**

Art. no. 913131

- Can be easily raised and lowered on the posts.
- Zinc plated and powder coated.
- Stable frame construction.
- Integrated toe board 260 mm.
- Weight 15,1 kg.
- 46 pieces delivered in stacking stillage.



**FRAME BARRIER 1,95 ALU**

Art. no. 913161

- Easy installation without tools.
- Easily raised and lowered on posts.
- Integrated toe board 150 mm.
- Welded frame construction.
- EN13374 – Class A.
- Weight 8,1 kg.
- 27 pieces delivered in stacking stillage.



**BARRIER 2,6**

Art. no. 913111

- Can be easily raised and lowered on the posts.
- Zinc plated and powder coated.
- Stable frame construction.
- Integrated toe board 260 mm.
- Weight 19,7 kg.
- 35 pieces delivered in stacking stillage.



**FRAME BARRIER 2,6 ALU**

Art. no. 913141

- Easy installation without tools.
- Easily raised and lowered on posts.
- Integrated toe board 150 mm.
- Welded frame construction.
- EN13374 – Class A.
- Weight 10,3 kg.
- 27 pieces delivered in stacking stillage.

**△ STANDARD SYSTEM**



**FRAME BARRIER HOLDER**

Art. no. 919021

- For installation of Frame barrier on Post 1,5 m alu.
- Hot dip galvanized.
- Weight 2,1 kg.



**FRAME BARRIER HOLDER 360**

Art. no. 919025

- Used in corner with Frame barriers to eliminate double attachments or double posts.
- Hot dip galvanized.
- Weight 1,6 kg.



**ADJUSTABLE LINK BARS**

2,4-3,5 m Art. no. 913330  
1,5-2,5 m Art. no. 913320  
0,9-1,5 m Art. no. 913321  
0,58-0,78 m Art. no. 913322

- For stairs, shafts and openings.
- Easily adjustable.
- Swivel brackets.
- Hot dip galvanized.
- Weight 9,0 kg, 6,2 kg, 4,3 kg, 3,0 kg.



**BARRIER BRACKET 360**

Art. no. 919010

- Used in corners to eliminate double attachments or posts.
- Enables the use of barriers despite radius.
- Dimensions, approx. 113 x 85 mm.
- Hot dip galvanized.
- Weight 0,4 kg.



**CLAMP 550**

Art. no. 912220

- Width span 25 - 550 mm.
- Several installation alternatives.
- Swivelling 360 deg. and reversible.
- Handles all stair angles.
- Hot dip galvanized.
- Weight 7,8 kg.
- 30 pieces delivered in stacking box stillage.



**CLAMP 300**

Art. no. 912245

- Width span 0 - 300 mm.
- Vertical or horizontal installation.
- Delivered with movable post holder.
- Several installation alternatives.
- Hot dip galvanized.
- Weight 5,4 kg.
- 50 pieces delivered in stacking box stillage.



**STEEL BEAM CLAMP**

Art. no. 912209

- Grips all types of steel beams and posts with flanges up to 300 mm.
- Integrated post bracket.
- Robust and durable thread.
- Hot dip galvanized.
- Weight 6,3 kg.
- 30 pieces delivered in stacking box stillage.



**WOOD BEAM CLAMP**

Art. no. 912174

- Flexible mounting on wooden beams.
- Beam dimensions 45 x 120-200 mm.
- Easy to adjust.
- Integrated post lock.
- Hot dip galvanized.
- Weight 2,9 kg.



**BEAM BRACKET ALU**

Primary Art. no. 912170  
Secondary Art. no. 912171

- Used on aluminum beams in form systems at slabs cast in site.
- Integrated post lock.
- Hot dip galvanized.
- Quick screw lock.
- Delivered in stacking stillage.
- Weight 3,0 kg, 2,3 kg.



**BEAM BRACKET WOOD**

Primary Art. no. 912168  
Secondary Art. no. 912169

- Used on wooden beams in form systems at vaults cast in site.
- Integrated post lock.
- Hot dip galvanized.
- Quick screw lock.
- Weight 4,0 kg, 2,3 kg.



**△ STANDARD SYSTEM**



**VERTICAL BRACKET**

Art. no. 912118

- Fits common balcony attachments.
- M10 c/c 100 mm.
- Two installation methods.
- Hot dip galvanized.
- Weight 1,4 kg.



**BALCONY BRACKET**

Art. no. 912150

- Fits all common balcony attachm.
- M10 or M12.
- Hot dip galvanized.
- Weight 1,3 kg.

**BALCONY BRACKET 10 GR**

Art. no. 912160

- Inclined bracket that facilitates installation of external panel wall.



**STAIR BRACKET**

Art. no. 911320

- Installed on the string.
- Pipe length 150 mm.
- Spacer length 30 mm.
- Cast in socket M12.
- Integrated post lock.
- Hot dip galvanized.
- Weight 0,8 kg.



**PLATFORM CONSOLE**

Art. no. 930089

- Bracket that creates flats at openings and shafts.
- Installed with console tenon.
- Maximum load 1,000 kg/console.
- Weight 1,4 kg.



**WALL BRACKET**

Art. no. 912121

- Used for installing Barrier or Adjustable link bar, for example, window openings with low parapet, lift openings, etc.
- Hot dip galvanized.
- Weight 0,7 kg.



**SIDE BRACKET 180**

Art. no. 912117

- Installed on the form work.
- Integrated post lock.
- Hot dip galvanized.
- Weight 0,6 kg.

**SIDE BRACKET 180 10 GR**

Art. no. 912123



**STANDING SEAM BRACKET**

Art. no. 930103

- Installed on steel sheet, cover.
- Quick installation.
- Handles various roof angles.
- Does not damage the steel sheet.
- Hot dip galvanized.
- Weight 2,6 kg.



**BRACKET FOR ROOF GUTTER**

Art. no. 930102

- Installed together with a scantling in the roof gutter.
- Integrated post lock.
- Hot dip galvanized.
- Weight 6,8 kg.



**BOLT GROUP BRACKET**

Art. no. 912182

- Used for bridge constructions.
- Does not interfere with the permanent railing.
- Low design to enable full function of the positioning nuts for the permanent railing.
- De-mounting can easily be made after the permanent railing has been set up.



**BARRIER BRACKET WEDGE COUPLER**

Single Art. no. 919015  
Double Art. no. 919016

- Used on posts or scaffold pipes (48,3 mm) for attachment of Barrier or Adjustable link bar.
- Integrated Barrier lock.
- Hot dip galvanized.
- Weight 1,1 kg, 1,7 kg.

**△ STANDARD SYSTEM**

**PRECAST SOCKET**

Art. no. 911108



**PROTECTIVE SLEEVE**

Art. no. 911107

- Precast socket with integrated post lock for casting in prefabricated constructions.
- To be positioned on the bottom reinforcement.

**WELDING SOCKET 150**

Art. no. 914009



- For welding on steel structures.
- Available with and without bottom.
- Integrated post lock.
- Untreated.
- Standard height 150 mm.

**PRECAST BRACKET**

Art. no. 912119



- Installed on the form work.
- Installed on a vertical surface and gives a free working space.
- Quick installation with keyhole.
- Integrated post lock.
- Hot dip galvanized.
- Weight 1,5 kg.
- 200 pieces delivered in stillage.

**PRECAST EDGE HOLDER 120 MM**

Art. no. 911112



- Installed on the inside of the form work on prefabricated flat floor structures.
- M12 c/c 120 mm.

**PRECAST SOCKET WALL**

Art. no. 911200



- For casting in prefabricated concrete walls and creates attachments for the edge protection in the outer slab edge.
- Length 450 mm.
- Integrated post lock.
- Delivered with plastic cover.
- Weight 1,8 kg.

**SOCKET W REBAR 400 MM**

Art. no. 911114



- For building structures cast in place.
- Integrated post lock.
- Length of reinforcement 400 mm.
- Delivered with plastic lid.

**WI BRACKET**

Art. no. 919200



- Precast insertion into wall elements.
- Used with Flex vertical beam.
- Custom length depending on insulation thickness.
- Insulation thickness up to 200 mm.
- Galvanized.
- Weight 1,8 kg.

**FLEX VERTICAL BEAM**

Art. no. 919205



- Post bracket to use with WI bracket.
- Integrated post lock.
- Hot dip galvanized.
- Weight 2,4 kg.

**SHEET PILING BRACKET**

Art. no. 912181



- For sheet piles up to 20 mm.
- Integrated post lock.
- Hot dip galvanized.
- Weight 1,6 kg.
- 150 pieces delivered in stacking stillage.

**COMPRESSION POST 2,2-3,5 M**

Art. no. 919030



- Tool free installation.
- Adjustable length 2,2-3,5 m.
- Tension load (F<sub>T</sub>) 100-150 kg.
- Fits with various barrier brackets.
- Hot dip galvanized.
- Weight 10,5 kg.



**△ FLEX SYSTEM**



**FLEX ROOF GABLE BRACKET**

Art. no. 914124

- Adjustable bracket.
- Configured according to requirement.
- Robust and durable.
- Hot galvanized components.
- Weight from 5,1 kg.



**FLEX FACADE BRACKET**

280 Art. no. 914043  
400 Art. no. 914118  
600 Art. no. 914119

- Adjustable 50 - 550 mm from the facade.
- Keyhole bracket.
- Hot dip galvanized.
- Weight 6,8 kg.



**FLEX EAVE BRACKET**

Art. no. 914123

- Adjustable bracket.
- Configured according to requirement.
- Robust and durable.
- Hot galvanized components.
- Weight from 5,1 kg.



**FLEX EAVE BRACKET WITH COUNTERHOLD**

Art. no. 914125

- Adjustable bracket.
- Configured according to requirement.
- Robust and durable.
- Hot galvanized components.
- Weight from 5,1 kg.



**FLEX WORKING PLATFORM**

Art. no. 981122

- Flexible installation on wall, floor structure or truss.
- Used with boardwalk steel sheet.
- Configured according to requirement.
- Hot galvanized components.
- Load classification 2 and 3.
- Console weight from 12 kg.



**FLEX BEAM**

600 Art. no. 914560  
1000 Art. no. 914510  
1500 Art. no. 914515

- Used when installing Flex systems.
- Hot galvanized.



**FLEX POST BRACKET**

Art. no. 914121

- Used when installing Flex systems.
- Hot galvanized.



**FLEX KEY CONSOLE**

Art. no. 914102

- Used when installing Flex systems.
- Hot galvanized.



**FLEX WALK WAY**

Art. no. 981123

**FLEX WALK WAY RIGHT**  
(green) Art. no. 981124

**FLEX WALK WAY LEFT**  
(red) Art. no. 981125



**FOOTWAY SHEET END PROTECTION**  
Art. no. 981126.  
Used when installing Flex working platform.



**FLEX ANGLE PLATE**

Art. no. 914100

- Used when installing Flex systems.
- Hot galvanized.



**FLEX ANGLE PLATE CORNER**

Art. no. 914101

- Used when installing Flex systems.
- Hot galvanized.

**△ HALL SYSTEM**



**BARRIER ALU 3 M**

Art. no. 910122

- Can easily be raised and lowered on the posts.
- Stable frame construction of 48,3 mm aluminum pipe.
- Integrated toe board 225 mm.
- Weight 17,2 kg.
- 14 pieces delivered in stacking stillage.



**ADJUSTABLE POST HOLDER**

Art. no. 911126

- Used for attaching the Hall system to enable adjustment of the position of the edge protection.
- Hot dip galvanized.
- Weight 7,9 kg.



**ROD 20 COMPLETE**

0,5 m Art. no. 914156

1,0 m Art. no. 914157

- Used when installing Hall system.
- Initial components are Rod 20, Wing nut 20, Coupler with bracket and Socket 20.



**POST 2,5 M ALU**

Art. no. 911121

- Used for attaching the Hall system to enable adjustment of the position of the edge protection.
- Aluminum pipe 48,3 x 4,0 mm.
- Weight 7,8 kg.
- 40 pieces delivered in stacking stillage.



**ROD 20**

0,5 m Art. no. 914158

1,0 m Art. no. 914145

- Included in Rod 20 complete used as attachment of the Hall system.



**JOINT PIN**

Art. no. 914152

- Used for jointing Barrier alu 3 m.



**SAFETY LOCKING RING**

Art. no. 914143

- Used to position the Swing bracket.



**WELD NUT 20**

Art. no. 914148

- Used for attachment of Hall system.



**CENTRE PLATE 140X140**

Art. no. 914154

- Used for attachment of Hall system.



**SIDE PLATE 140X140**

Art. no. 914155

- Used for attachment of Hall system.



<div data-bbox="81 118 387 152" data-label="Section-Header"><p><b>▲ SAFETY FAN SYSTEM</b></p></div> <div data-bbox="108 230 395 421" data-label="Image"></div> <div data-bbox="424 197 667 226" data-label="Section-Header"><p><b>SAFETY FAN SLAB</b></p></div> <div data-bbox="424 235 574 257" data-label="Text"><p>Art. no. 914014</p></div> <div data-bbox="424 284 783 387" data-label="List-Group"><ul style="list-style-type: none"><li>• Installed on the floor structure with the possibility of directly integrating SafetyRespect's regular edge protection system.</li></ul></div>	<div data-bbox="863 208 1102 450" data-label="Image"></div> <div data-bbox="1155 197 1501 226" data-label="Section-Header"><p><b>SAFETY FAN SCAFFOLDING</b></p></div> <div data-bbox="1155 235 1303 257" data-label="Text"><p>Art. no. 914015</p></div> <div data-bbox="1155 284 1493 336" data-label="List-Group"><ul style="list-style-type: none"><li>• Can be installed on most existing scaffold brands.</li></ul></div>
<div data-bbox="124 595 391 801" data-label="Image"></div> <div data-bbox="424 586 671 616" data-label="Section-Header"><p><b>SAFETY FAN WALL</b></p></div> <div data-bbox="424 624 574 647" data-label="Text"><p>Art. no. 914016</p></div> <div data-bbox="424 674 767 752" data-label="List-Group"><ul style="list-style-type: none"><li>• Installed on a vertical surface with regular edge protection free-standing in the working area.</li></ul></div>	<div data-bbox="858 584 1126 815" data-label="Image"></div> <div data-bbox="1155 586 1468 616" data-label="Section-Header"><p><b>NET SAFETY FAN 3X6 M</b></p></div> <div data-bbox="1155 624 1303 647" data-label="Text"><p>Art. no. 914013</p></div>
<div data-bbox="137 1003 367 1218" data-label="Image"></div> <div data-bbox="424 981 679 1039" data-label="Section-Header"><p><b>BOTTOM SUPPORT SAFETY FAN</b></p></div> <div data-bbox="424 1050 574 1072" data-label="Text"><p>Art. no. 915102</p></div> <div data-bbox="424 1099 764 1151" data-label="List-Group"><ul style="list-style-type: none"><li>• Used for attaching Safety fans on floor structures.</li></ul></div>	<div data-bbox="866 1003 1102 1193" data-label="Image"></div> <div data-bbox="1155 981 1347 1039" data-label="Section-Header"><p><b>TOP BRACKET SAFETY FAN</b></p></div> <div data-bbox="1155 1050 1303 1072" data-label="Text"><p>Art. no. 915100</p></div> <div data-bbox="1155 1099 1493 1151" data-label="List-Group"><ul style="list-style-type: none"><li>• Used for attaching Safety fans on floor structures.</li></ul></div>
<div data-bbox="137 1453 367 1568" data-label="Image"></div> <div data-bbox="424 1370 635 1400" data-label="Section-Header"><p><b>ALU BEAM 1500</b></p></div> <div data-bbox="424 1408 572 1433" data-label="Text"><p>Art. no. 915101</p></div> <div data-bbox="424 1458 764 1487" data-label="List-Group"><ul style="list-style-type: none"><li>• Used for attaching the Safety fan.</li></ul></div>	<div data-bbox="963 1379 1040 1615" data-label="Image"></div> <div data-bbox="1155 1370 1497 1400" data-label="Section-Header"><p><b>FLEX KEYHOLE BRACKET</b></p></div> <div data-bbox="1155 1408 1303 1433" data-label="Text"><p>Art. no. 914105</p></div> <div data-bbox="1155 1458 1493 1509" data-label="List-Group"><ul style="list-style-type: none"><li>• Used for attaching Safety fans on floor structures.</li></ul></div>
<div data-bbox="137 1809 367 1942" data-label="Image"></div> <div data-bbox="424 1771 625 1800" data-label="Section-Header"><p><b>PLATE 140X140</b></p></div> <div data-bbox="424 1809 572 1834" data-label="Text"><p>Art. no. 914141</p></div> <div data-bbox="424 1859 764 1912" data-label="List-Group"><ul style="list-style-type: none"><li>• Used for attaching Safety fans on floor structures.</li></ul></div>	

▲ OTHER PRODUCTS



**DOUBLE COUPLER  
SWIVELLING (WEDGE)**

Art. no. 915105

- Easy to install without tools.
- Fits SafetyRespect's different posts and aluminum pipes, as well as common scaffold brands.



**DOUBLE COUPLER  
STATIONARY (WEDGE)**

Art. no. 914149

- Easy to install without tools.
- Fits SafetyRespect's different posts and aluminum pipes, as well as common scaffold brands.



**DOUBLE COUPLER  
SWIVELLING (SCREW)**

Art. no. 915108

- Used, among other things, when Barrier alu 3 m is to be jointed overlapping.
- Fits SafetyRespect's different posts and aluminum pipes, as well as common scaffold brands.



**DOUBLE COUPLER  
STATIONARY (SCREW)**

Art. no. 915107

- Installed on, among other things, post/pipe as attachment for Barrier alu 3 m or Alu pipes.
- Fits SafetyRespect's different posts and aluminum pipes, as well as common scaffold brands.



**COUPLER BRACKET  
SAFETY FAN**

Art. no. 915103

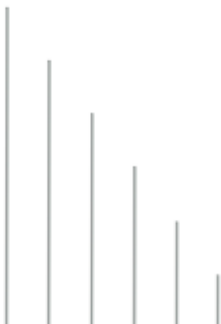
- Used when installing Safety fan on walls.
- Fits SafetyRespect's different posts and aluminum pipes, as well as common scaffold brands.



**COUPLER 48-50**

Art. no. 915104

- One end fits SafetyRespect's different posts and aluminum pipes and most of the common scaffold brands.
- The other end fits Flex beam 50 mm and Alu beam 50 mm.



**ALU PIPE**

6 m Art. no. 910114  
5 m Art. no. 910120  
4 m Art. no. 910115  
3 m Art. no. 910116  
2 m Art. no. 910117  
1 m Art. no. 910118

- Can be used as a complement to our edge protection systems.



**FALL PROTECTION NET**

10 x 12 m Art. no. 941010  
8 x 12 m Art. no. 941011  
8 x 10 m Art. no. 941012



**CONSOLE BRACKET**

Art. no. 912116

- Attachment on slab edge and creates free working space.
- Several installation alternatives.
- Adjustable or stationary position.
- Installed with Socket base.
- Hot-galvanised.
- Weight 1,4 kg.



▲ OTHER PRODUCTS



### GROUND SUPPORT PLATE

Art. no. 912320

- Used with Socket base.
- Three mounting points M16.
- Zinced and powder coated.
- Weight 7,9 kg.
- 30 pieces delivered in stacking stillage.



### STRAP

0,6 m Art. no. 919206  
1,5 m Art. no. 919215  
5,0 m Art. no. 919250

- Great range of application.
- Very strong and durable.
- Three different lengths.



### CAST PROTECTION FOR SOCKET BASE

Art. no. 911109

- Easy to install and uninstall.
- The barrier is lifted in one step on the post.
- Kept in place by the barrier.
- Diameter 158 mm, height 92 mm.



### CAST PROTECTION FOR POST FOOT

Art. no. 911140

- Can also be used with Socket base.
- Stackable.
- Material HDPE.



### BOX STILLAGE

Art. no. 981130

- Maximum load 800 kg.
- Dimensions: width 780 mm, length 900 mm, height 650 mm.



### POST STILLAGE

Art. no. 981120

- Adapted to Post 1,3 m.
- Maximum load 800 kg.
- Dimensions: width 780 mm, length 900 mm, height 650 mm.



### BARRIER STILLAGE VERTICAL

Art. no. 981111

- Adapted to Barriers.
- Maximum load 800 kg.
- Dimensions: width 780 mm, length 900 mm, height 1,538 mm.



### BARRIER STILLAGE 2,6 L

Art. no. 981109

- Adapted to Barrier 2,6.
- Maximum load 800 kg.
- Dimensions: width 1,245 mm, length 2,700 mm, height 840 mm.

*“Our own production allows us greater flexibility, full quality control and also the ability to control capacity according to our needs.”*

△ GUARD RAIL SYSTEM

**BARRIER**



HOT DIP GALVANIZED  
1,8 m Art. no. 983121  
2,5 m Art. no. 983122  
3,2 m Art. no. 983123

- For demanding environments.
- Can be equipped with reflex.
- Easily coupled through integrated hooks and loops.
- Weight 13,5 kg, 17,5 kg, 22,0 kg.

**BARRIER**



GALVANIZED AND POWDER COATED  
1,8 m Art. no. 983131  
2,5 m Art. no. 983132  
3,2 m Art. no. 983133

- Custom profiling possible.
- Can be equipped with reflex.
- Easily coupled through integrated hooks and loops.
- Weight 13,5 kg, 17,5 kg, 22,0 kg.

**GUARD RAIL**



HOT DIP GALVANIZED  
1,8 m Art. no. 983101  
2,5 m Art. no. 983102  
3,2 m Art. no. 983103

- Custom profiling possible.
- Easily coupled through integrated hooks and loops.
- Can be placed in several angles.
- Weight 9,5 kg, 12,0 kg, 14,5 kg.

**GUARD RAIL**



GALVANIZED AND POWDER COATED  
1,8 m Art. no. 983111  
2,5 m Art. no. 983112  
3,2 m Art. no. 983113

- Custom profiling possible.
- Easily coupled through integrated hooks and loops.
- Can be placed in several angles.
- Weight 9,5 kg, 12,0 kg, 14,5 kg.

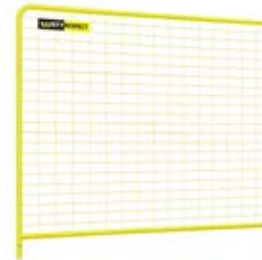
**FENCE**



HOT DIP GALVANIZED  
1,8 m Art. no. 983141  
2,5 m Art. no. 983142  
3,2 m Art. no. 983143

- For demanding environments.
- Can be placed in several angles.
- Custom profiling possible.
- Weight 16 kg, 19 kg, 23 kg.

**FENCE**



GALVANIZED AND POWDER COATED  
1,8 m Art. no. 983151  
2,5 m Art. no. 983152  
3,2 m Art. no. 983153

- Custom profiling possible.
- For demanding environments.
- Can be placed in several angles.
- Weight 16 kg, 19 kg, 23 kg.

**FLAT FOOT**

Art. no. 983201



- Ground support for guard rail system.
- Lockable in different angles.
- Can be supplemented with toe board.
- Hot dip galvanized.
- Weight 3,1 kg.

**ANGLE FOOT**

Art. no. 983202



- Ground support for guard rail system.
- Lockable in different angles.
- Can be supplemented with toe board.
- Hot dip galvanized.
- Weight 1,4 kg.

**BLOCK FOOT**

Art. no. 983203



- Ground support for guard rail system.
- Multiple holes for flexible placement of guard rails.
- Cut outs for toe board.
- Composite material.
- Weight 15 kg.

**TOE BOARD HOLDER**

Art. no. 983401



- Holder for toe board.
- Compatible with Flat foot and Angle foot.
- Rotatable around the foot.
- Position locked by hand.
- Hot dip galvanized.
- Weight 0,5 kg.



<div data-bbox="81 118 517 152"><p><b>△ PERSONAL FALL PROTECTION</b></p></div> <div data-bbox="181 192 341 456"></div> <div data-bbox="429 185 777 479"><p><b>HARNESS SR TECHNIC</b> Art. no. 962010</p><ul style="list-style-type: none"><li>• Professional work positioning and fall arrest harness.</li><li>• Equipped with speed buckle, easy to put on and take off.</li><li>• Two attachment points, chest and dorsal.</li><li>• EN 358, EN 361, EN 813, CE 1019, NFPA Class III, ANSI Z359.1</li></ul></div>	<div data-bbox="932 185 1046 468"></div> <div data-bbox="1169 185 1473 454"><p><b>HARNESS SR BODY</b> Art. no. 962021</p><ul style="list-style-type: none"><li>• Lightweight and flexible fall arrest harness.</li><li>• Equipped with speed buckle, easy to put on and take off.</li><li>• Two attachment points, chest and dorsal.</li><li>• EN 361, CE 1019.</li></ul></div>										
<div data-bbox="142 555 373 860"></div> <div data-bbox="429 566 754 808"><p><b>MOBILE PLATFORM KIT</b> Art. no. 96730</p><ul style="list-style-type: none"><li>• Harness SR Body.</li><li>• Block SR IKAR textile 1,8 m.</li><li>• Carabiner alu, oval 26 kN ozone black triplock.</li><li>• Sling 60 cm, 22 kN.</li><li>• Gear bag 35 l SR.</li></ul></div>	<div data-bbox="868 562 1123 851"></div> <div data-bbox="1169 566 1495 808"><p><b>CONSTRUCTION KIT</b> Art. no. 967310</p><ul style="list-style-type: none"><li>• Harness SR Body.</li><li>• Block SR IKAR steel 6 m.</li><li>• Carabiner alu, oval 26 kN ozone black triplock.</li><li>• Lanyard steel I 100 cm 15 kN.</li><li>• Gear bag 35 l SR.</li></ul></div>										
<div data-bbox="110 1003 397 1211"></div> <div data-bbox="429 967 774 1261"><p><b>POSITIONING KIT</b> Art. no. 967320</p><ul style="list-style-type: none"><li>• Harness SR Technic.</li><li>• Positioning line “Site” 2 m with Locker lock.</li><li>• Carabiner alu, oval 26 kN ozone black triplock.</li><li>• Absorber reactor 140 EYE Y 155 cm + 2xK35.</li><li>• Gear bag 35 l SR.</li></ul></div>	<div data-bbox="836 999 1139 1218"></div> <div data-bbox="1169 967 1479 1158"><p><b>ROOF KIT</b> Art. no. 967330</p><ul style="list-style-type: none"><li>• Harness SR Technic.</li><li>• Roof line with Back up, 20 m.</li><li>• Lanyard steel I, 100 cm 15 kN.</li><li>• Gear bag 35 l SR.</li></ul></div>										
<div data-bbox="118 1379 389 1576"></div> <div data-bbox="429 1368 735 1494"><p><b>RESCUE KIT WITH BAG</b> 60 m Art. no. 966151 100 m Art. no. 966161</p><ul style="list-style-type: none"><li>• With vacuum seal pack.</li></ul></div>	<div data-bbox="836 1384 1147 1568"></div> <div data-bbox="1169 1368 1492 1494"><p><b>RESCUE KIT WITH CASE</b> 60 m Art. no. 966153 100 m Art. no. 966163</p><ul style="list-style-type: none"><li>• With vacuum seal pack.</li></ul></div>										
<div data-bbox="137 1783 349 1971"></div> <div data-bbox="429 1760 737 1877"><p><b>HARNESS PADDING</b></p><table><tr><td>Technic</td><td>Art. no. 962018</td></tr><tr><td>Body S/M/L</td><td>Art. no. 962028</td></tr><tr><td>Body XL/XXL</td><td>Art. no. 962029</td></tr></table></div>	Technic	Art. no. 962018	Body S/M/L	Art. no. 962028	Body XL/XXL	Art. no. 962029	<div data-bbox="924 1771 1053 2018"></div> <div data-bbox="1169 1760 1372 1850"><p><b>GEAR BAG SR</b></p><table><tr><td>35 l</td><td>Art. no. 961090</td></tr><tr><td>50 l</td><td>Art. no. 961091</td></tr></table></div>	35 l	Art. no. 961090	50 l	Art. no. 961091
Technic	Art. no. 962018										
Body S/M/L	Art. no. 962028										
Body XL/XXL	Art. no. 962029										
35 l	Art. no. 961090										
50 l	Art. no. 961091										

△ PERSONAL FALL PROTECTION



**HELMET SR FLASH**

Black Art. no. 964011  
High vis. yellow Art. no. 964012



**ACCESSORIES HELMET**

Visor flash Art. no. 964023  
Ear protection Art. no. 964032



**RESCUE EXPANSION PACK**

Art. no. 966100



**FINE LINE SR 20 M**

Art. no. 967055



**ROOF LINE WITH BACK UP**

10 m Art. no. 967202  
20 m Art. no. 967203



**ABSORBER REACTOR  
140 EYE Y 155 2XK353**

Art. no. 967111



**BLOCK SR IKAR**

1,8 m textile Art. no. 963060  
3,5 m textile Art. no. 963061  
6 m steel Art. no. 963062  
12 m steel Art. no. 963063



**LANYARD STEEL I 15 kN**

100 cm Art. no. 967041  
130 cm Art. no. 967042  
180 cm Art. no. 967043



**SLINGS, 22 kN**

60 cm Art. no. 967071  
80 cm Art. no. 967072  
120 cm Art. no. 967073  
150 cm Art. no. 967074



**CARABINER TRIPLOCK**

D 23 kN Alu Art. no. 965011  
Oval 26 kN Alu Art. no. 965013  
Oval 30 kN steel Art. no. 965021  
D 50 kN steel Art. no. 965022



**ROPE PROTECTOR  
DEFENDER**

80 cm Art. no. 960013



**ROPE STATIC 11 MM**

50 m Art. no. 967016



**TOOL HOLDER STRAP**

Art. no. 965092

**TOOL HOOK PORTER**

Art. no. 965091



**ANCHOR POINTS**

Hanger stainl. 12 mm Art. no. 967062  
D-bolt Art. no. 967063  
Door D-mobile Art. no. 967061



**ANCHOR POINTS**

ABS-Lock tube Art. no. 960102  
Snake brace M 300 Art. no. 967065



**HEAD OFFICE**

+46 (0)63 13 04 00  
info@safetyrespect.se  
www.safetyrespect.se

**DELIVERIES**

Storsjöstråket 15  
831 34 Östersund  
Sweden

**MAIL**

Box 69  
SE-831 21 Östersund  
Sweden

**STOCKHOLM**

+46 (0)8 584 90 400  
sto@safetyrespect.se  
www.safetyrespect.se

**SAFETYRESPECT AB**

Finspångsgatan 30  
163 53 Spånga  
Sweden

**GOTHENBURG**

+46 (0)31 701 74 00  
got@safetyrespect.se  
www.safetyrespect.se

**SAFETYRESPECT AB**

August Barks Gata 5  
421 32 Västra Frölunda  
Sweden

**SKÅNE**

+46 (0)46 12 44 00  
syd@safetyrespect.se  
www.safetyrespect.se

**SAFETYRESPECT AB**

Spånvägen 15A  
245 34 Staffanstorps  
Sweden

**NORWAY**

+47 22 32 72 32  
info@safetyrespect.no  
www.safetyrespect.no

**SAFETYRESPECT**

Stamveien 8 & 9  
1481 Hagan  
Norway

**LITHUANIA**

+370 5 233 4400  
info@safetyrespect.lt  
www.safetyrespect.lt

**SAFETYRESPECT UAB**

Ukmergės g. 427 C  
LT-14185, Bukiškio km  
Vilniaus raj  
Lithuania

**USA**

+1 714 463 4589  
info@safetyrespect.com  
www.safetyrespect.com

**SAFETYRESPECT INC.**

22445 La Palma Ave, Unit C  
Yorba Linda, CA 92887  
USA

**TURKEY**

+90 216 307 8787  
infotr@safetyrespect.se  
www.safetyrespect.com.tr

**SAFETYRESPECT LTD**

Kozyatağı mah. Şehit İlknur Keleş  
Sok. No:7 Hüseyin Bağdatlıoğlu İş  
Merkezi Kat:4 Daire:8  
Kadıköy – İstanbul  
Turkey

