

PRECAST ATTACHMENTS

TECHNICAL INFORMATION



**WE
SAVE
LIVES**

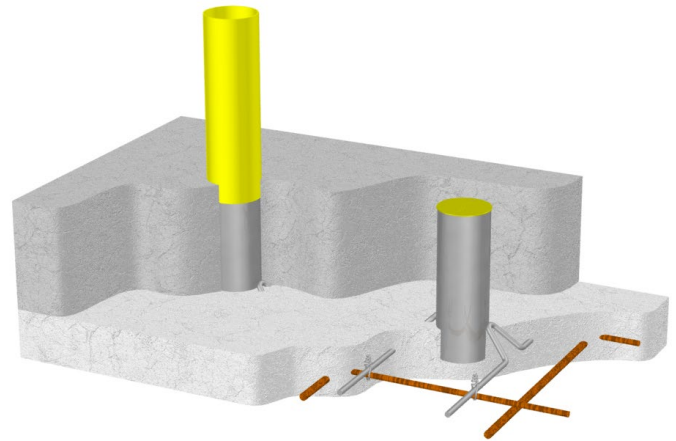
SAFETY RESPECT

PRECAST ATTACHMENTS

PRECAST SOCKET

Part. no. 911108

- Precast socket with integrated post lock for casting in to prefabricated constructions.
- To be positioned on the bottom reinforcement.
- Delivered with plastic cover.
- Weight 1 lb 8.7 oz



PROTECTIVE SLEEVE

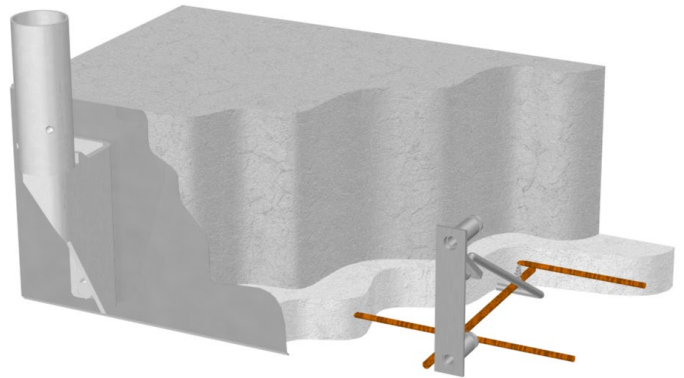
Part. no. 911107



PRECAST EDGE HOLDER

Part. no. 911112

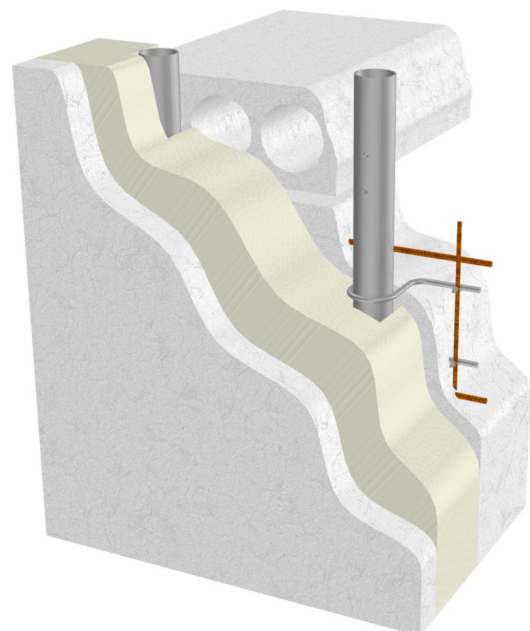
- Installed on the inside of the form work on prefabricated flat floor structures.
- M12 c/c 4 ¾ in
- Weight 1lb 12 oz

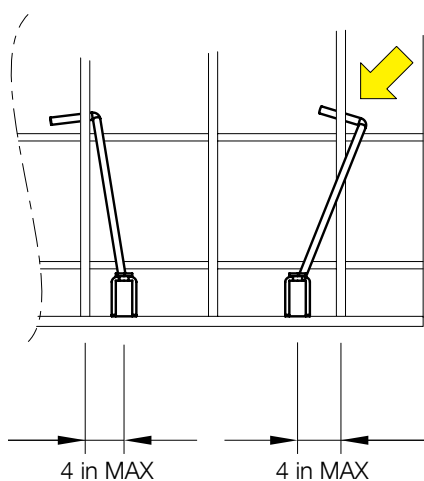
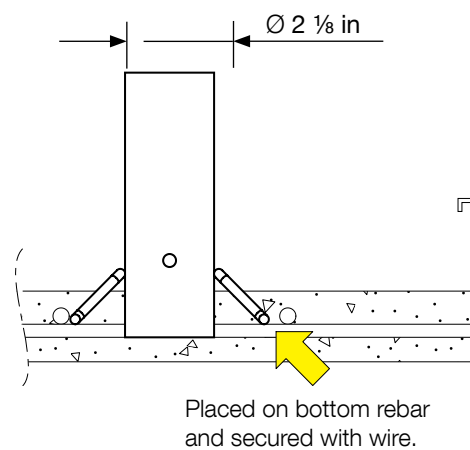
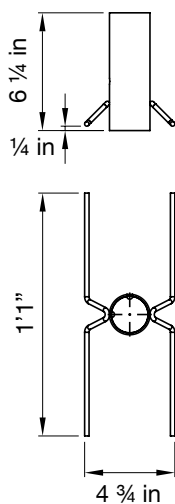
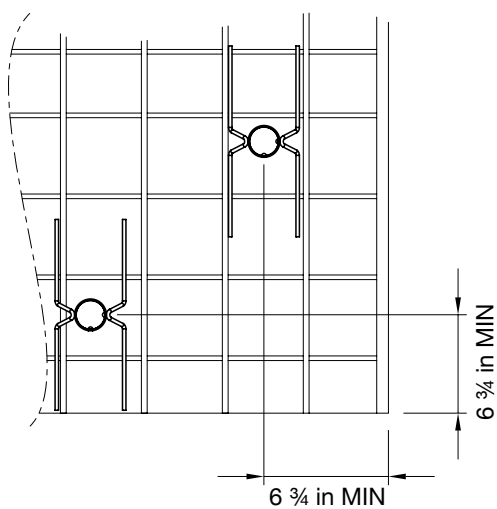


PRECAST SOCKET WALL

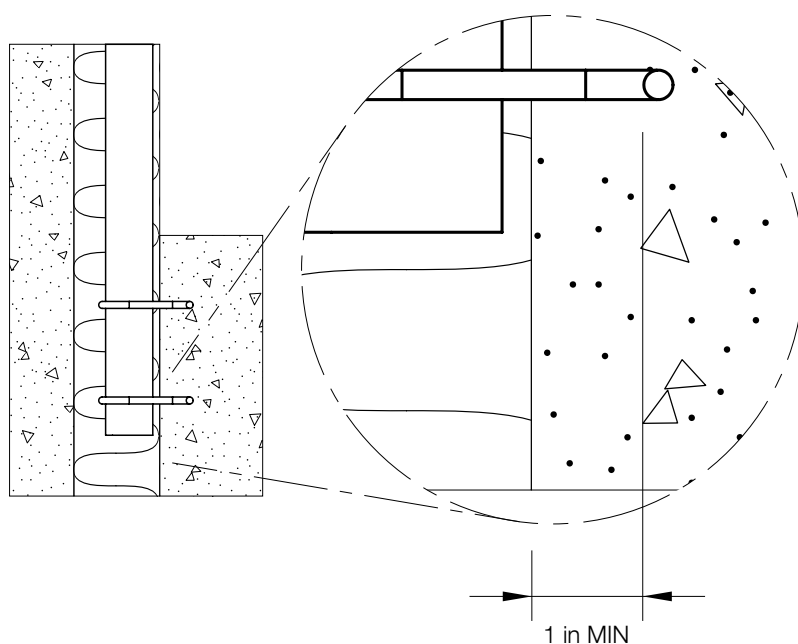
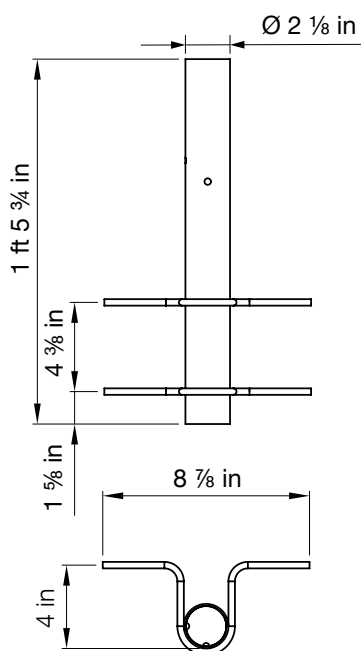
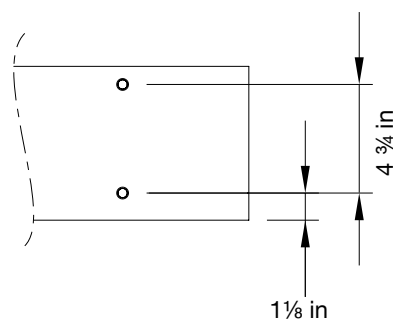
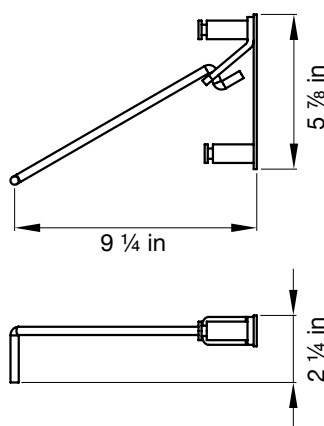
Part. no. 911200

- For casting in to prefabricated concrete walls to create attachments for the edge protection in the outer slab edge.
- Length 1ft 5 ¾ in
- Integrated post lock.
- Delivered with plastic cover.
- Weight 4 lb

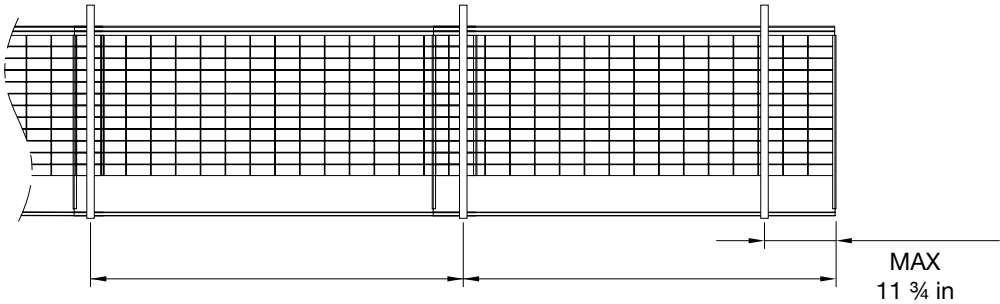
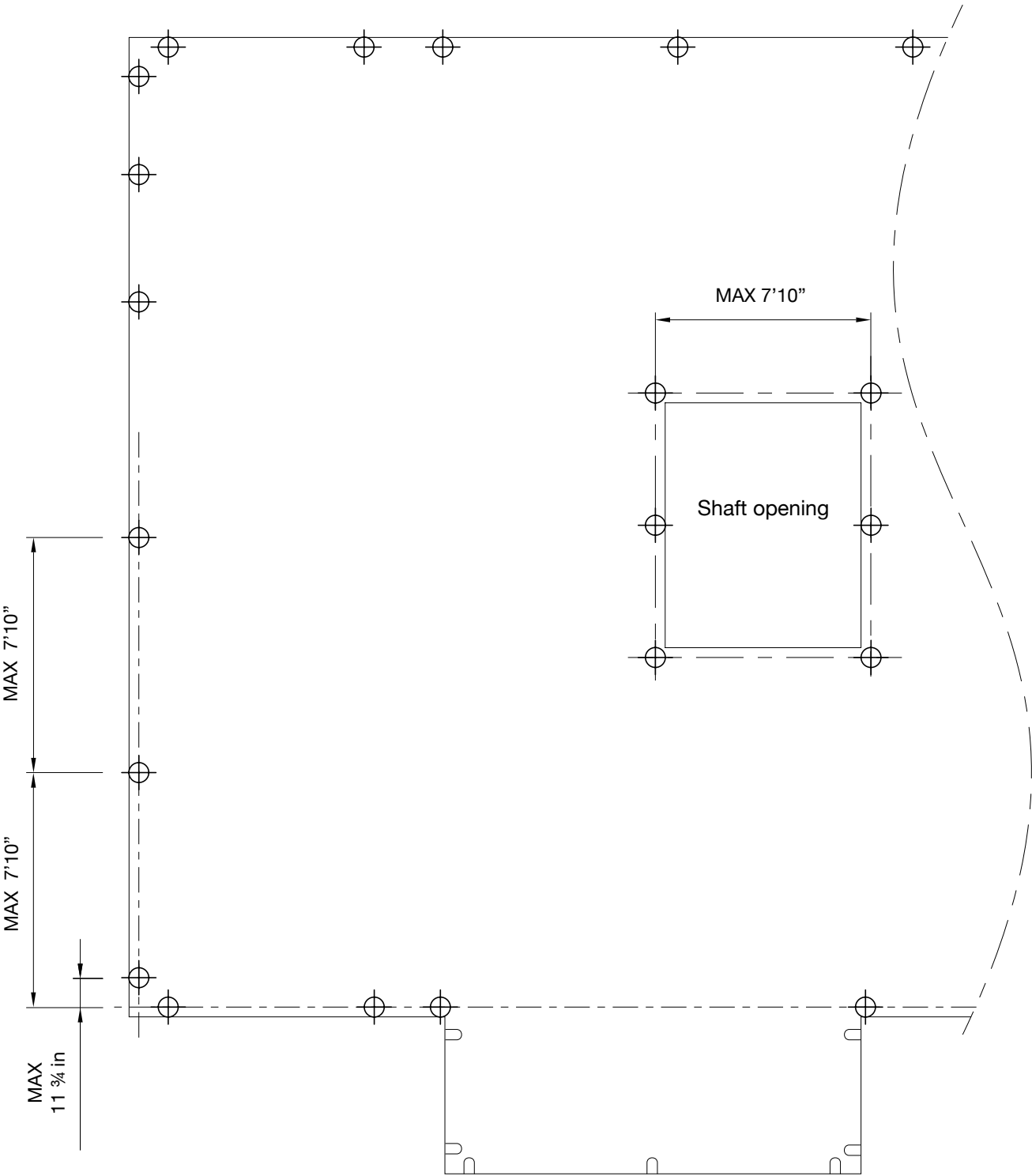




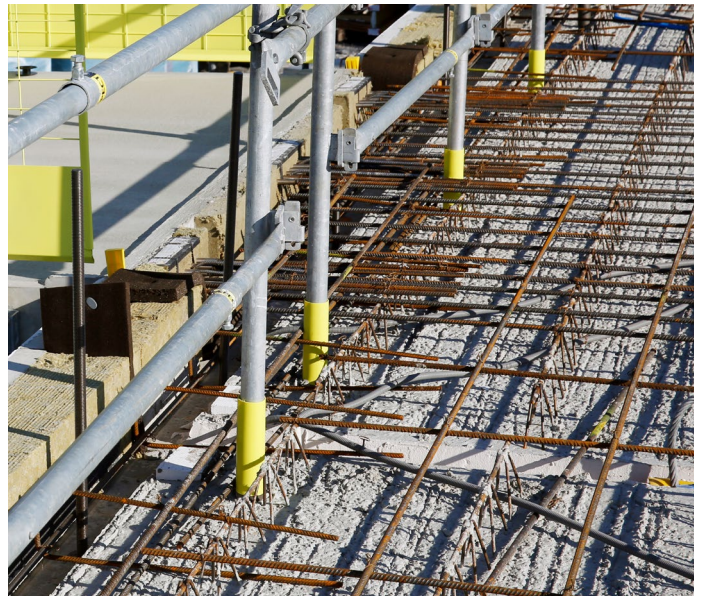
Hook always placed underneath rebar and secured with wire.



POSITIONING



Barrier 8'6"	MAX 7'10"	MAX 7'10"
Barrier 6'4"	5'11"	5'11"
Barrier 4'3"	3'11"	3'11"





We reserve the right to make any technical changes.



SAFETYRESPECT US

+1 626-367-6353

INFOUS@SAFETYRESPECT.COM • US.SAFETYRESPECT.COM

